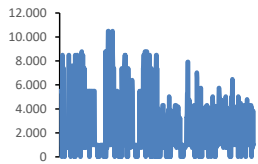
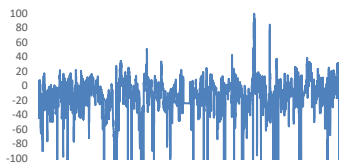


Jöfnunarorkuverð [kr/MWst]



| | |
|---------------------|-------|
| Meðalverð: | 2657 |
| Hæsta verð: | 10500 |
| Lægsta verð: | 0 |
| Hlutfall upp-verðs: | 35,4% |
| Hlutfall nið-verðs: | 64,6% |

Reglunarafi [MW]



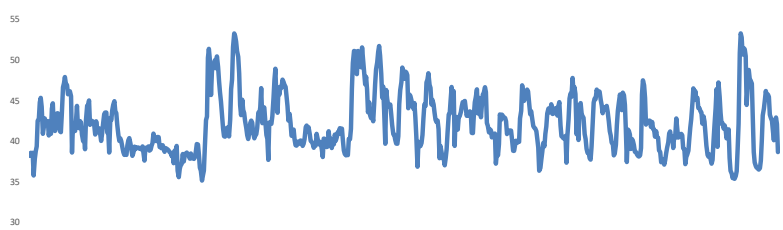
| | |
|-----------------|------|
| Meðalgildi: | -14 |
| Hæsta gildi: | 99 |
| Lægsta gildi: | -573 |
| Hlutfall uppr: | 0 |
| Hlutfall niður: | 1 |

Innmötun

| | |
|-------------------|---------|
| Orkuflutn. [GWst] | 1.532,0 |
| Meðaltal [MW]: | 2.059,2 |
| Hámark [MW]: | 2.205,1 |
| Lágmark [MW]: | 1.599,2 |



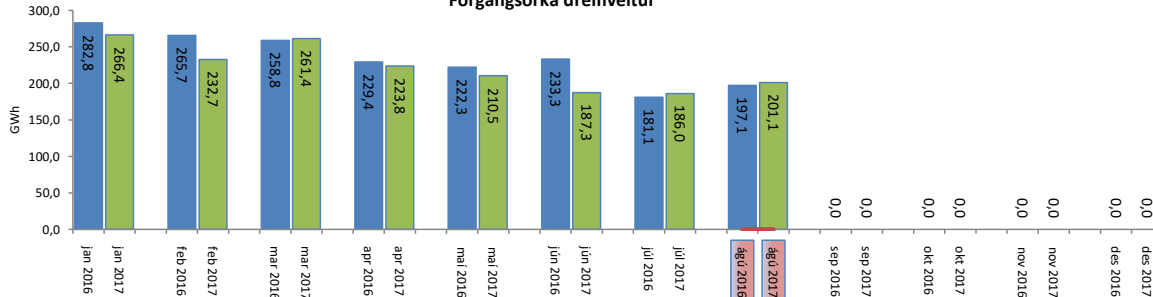
Flutningstöp



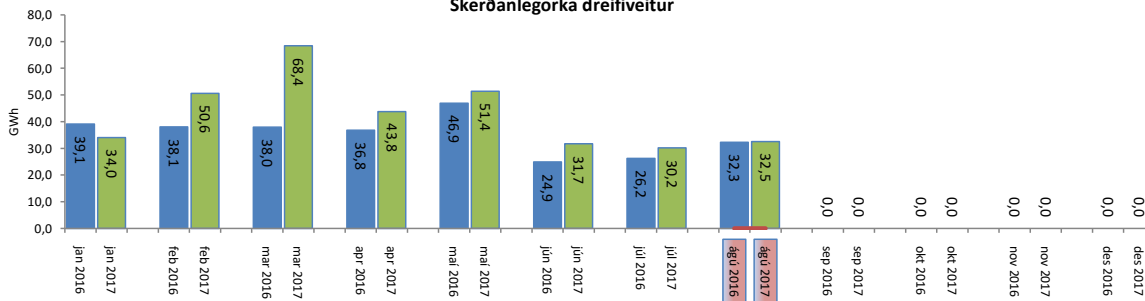
| | |
|-------------------------------------|-------|
| Heildartöp [GWst]: | 31,42 |
| Tapahlutfall af innmötun | 2,1% |
| Hámark tapa [MW]: | 53,28 |
| Lágmark tapa [MW]: | 35,13 |
| Grunntöp [MW]: | 34,00 |
| Pöntuð viðbótartöp [GWst]: | 6,62 |
| Nýtt af viðbótartöpum ársfj. mán.: | 47,3% |
| Nýtt af viðbótartöpum ársfj. heild: | 85,9% |
| Frávik frá pöntun: | 5,9% |

Flutt orka

Forgangsrorka dreifiveitur



Skerðanlegorka dreifiveitur



Orka Stórnotendur

