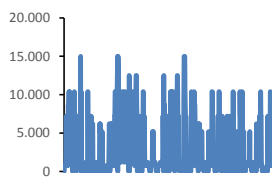
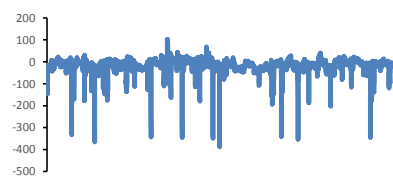


Jöfnunarorkuverð [kr/MWst]



Meðalverð:	2841
Hæsta verð:	15000
Lægsta verð:	0
Hlutfall upp-verðs:	35,0%
Hlutfall nið-verðs:	65,0%

Reglunarafi [MW]



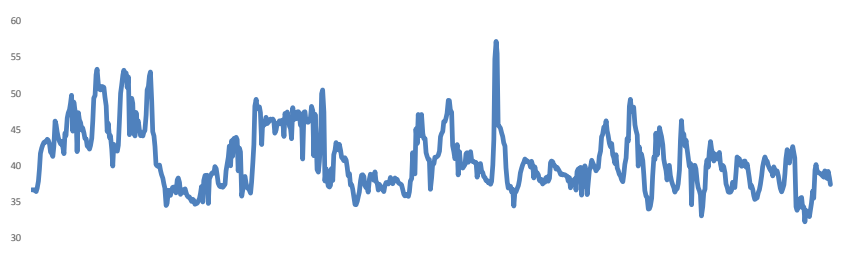
Meðalgildi:	-16
Hæsta gildi:	102
Lægsta gildi:	-388
Hlutfall uppr:	24,89%
Hlutfall niður:	75,11%

Innmötun

Orkuflutn. [GWst]	1.446,7
Meðaltal [MW]:	2.009,3
Hámark [MW]:	2.166,2
Lágmark [MW]:	1.840,7



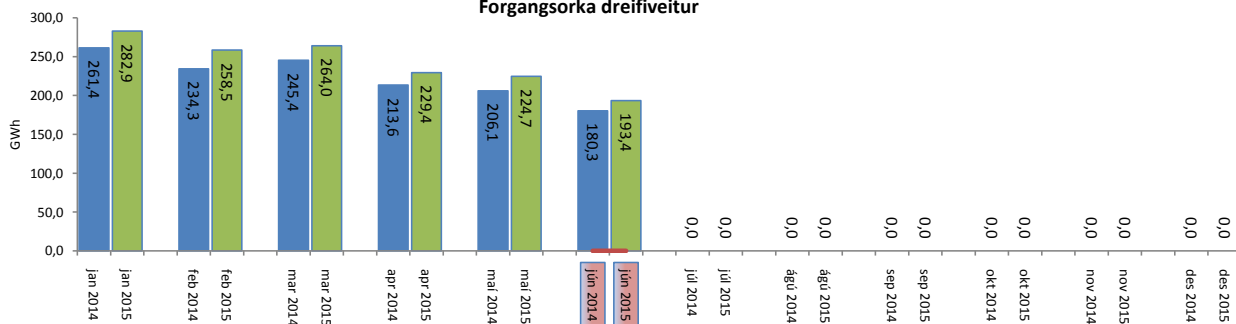
Flutningstöp



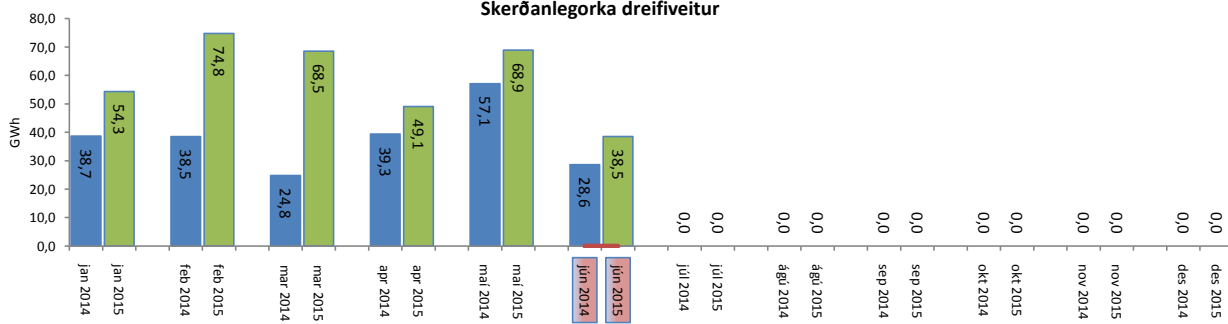
Heildartöp [GWst]:	29,43
Tapahlutfall af innmötun	2,0%
Hámark tapa [MW]:	57,20
Lágmark tapa [MW]:	32,19
Grunntöp [MW]:	32,00
Pöntuð viðbótartöp [GWst]:	7,56
Nýtt af viðbótartöpum ársfj. mán.:	55,2%
Nýtt af viðbótartöpum ársfj. heild:	127,1%
Frávik frá pöntun:	6,8%

Flutt orka

Forgangorka dreifiveitur



Skerðanlegorka dreifiveitur



Orka Stórnotendur

