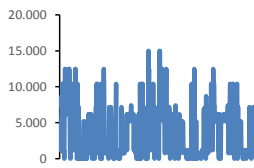
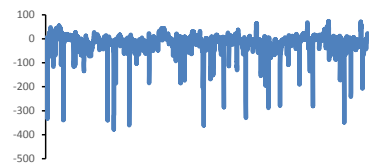


Jöfnunarorkuverð [kr/MWst]



Meðalverð:	3507
Hæsta verð:	15000
Lægsta verð:	0
Hlutfall upp-verðs:	42,2%
Hlutfall nið-verðs:	57,8%

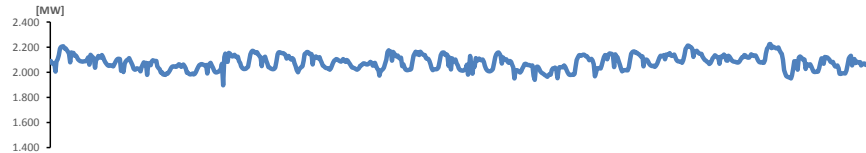
Reglunarafl [MW]



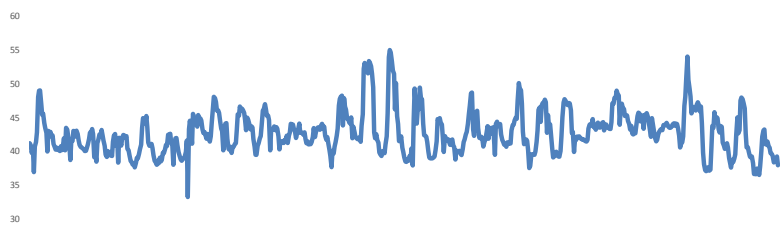
Meðalgildi:	-14
Hæsta gildi:	74
Lægsta gildi:	-378
Hlutfall uppr:	27,29%
Hlutfall niður:	72,71%

Innmötun

Orkuflutn. [GWst]	1.497,3
Meðaltal [MW]:	2.079,5
Hámark [MW]:	2.225,2
Lágmark [MW]:	1.895,8



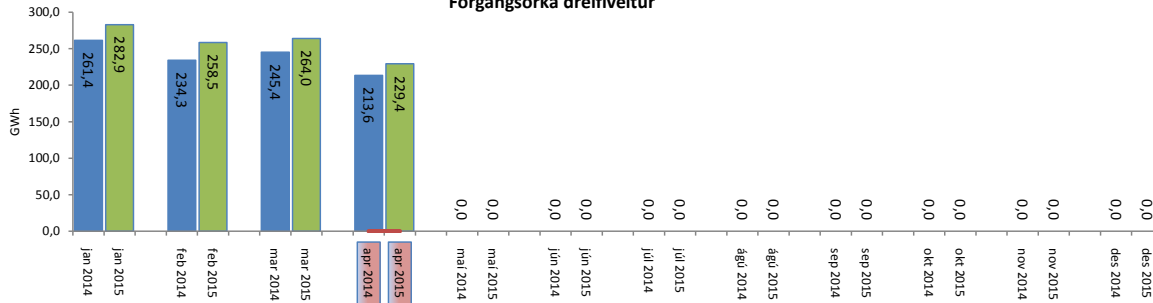
Flutningstöp



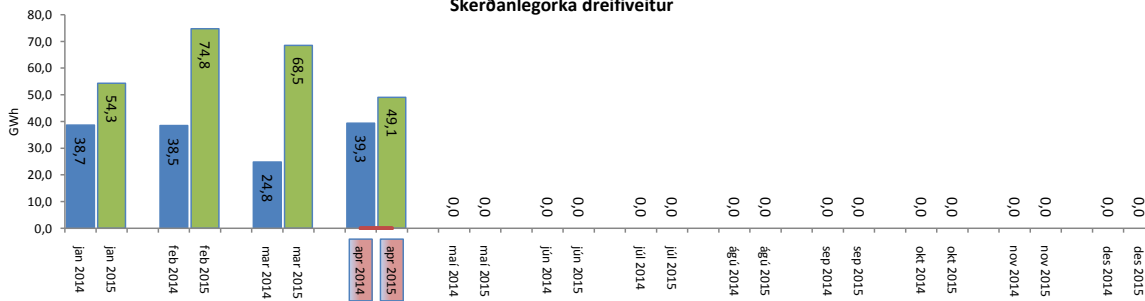
Heildartöp [GWst]:	30,81
Tapahlutfall af innmötun	2,1%
Hámark tapa [MW]:	55,00
Lágmark tapa [MW]:	33,26
Grunntöp [MW]:	38,00
Pöntuð viðbótartöp [GWst]:	4,33
Nytt af viðbótartöpum ársfj. mán.:	31,6%
Nytt af viðbótartöpum ársfj. heild:	31,6%
Frávik frá pöntun:	5,4%

Flutt orka

Forgangsorta dreifiveitur



Skerðanlegortu dreifiveitur



Orka Stórnotendur

