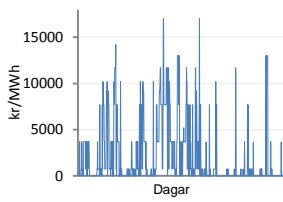
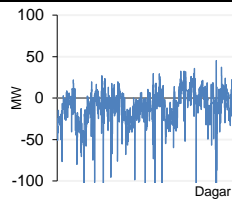


Jöfnunarorkuverð



Meðalverð [kr/MWh] :	2095
Hæsta verð [kr/MWh] :	17000
Lægsta verð [kr/MWh] :	0
Hlutfall upp-verðs [%] :	27,8
Hlutfall nið-verðs [%] :	72,2

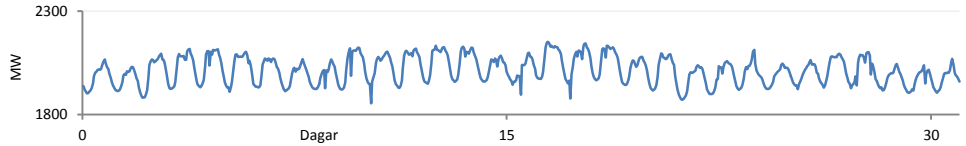
Reglunarafi



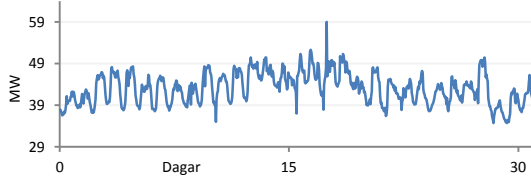
Meðalgildi [MW] :	-19,8
Hæsta gildi [MW] :	45,4
Lægsta gildi [MW] :	-1417,5
Hlutfall uppr [%] :	18,5
Hlutfall niður [%] :	81,5

Innmötun

Orkuflutn. [GWh]	1498,5
Meðaltal [MW]	2014,0
Hámark [MW]	2151,5
Lágmark [MW]	1854,2



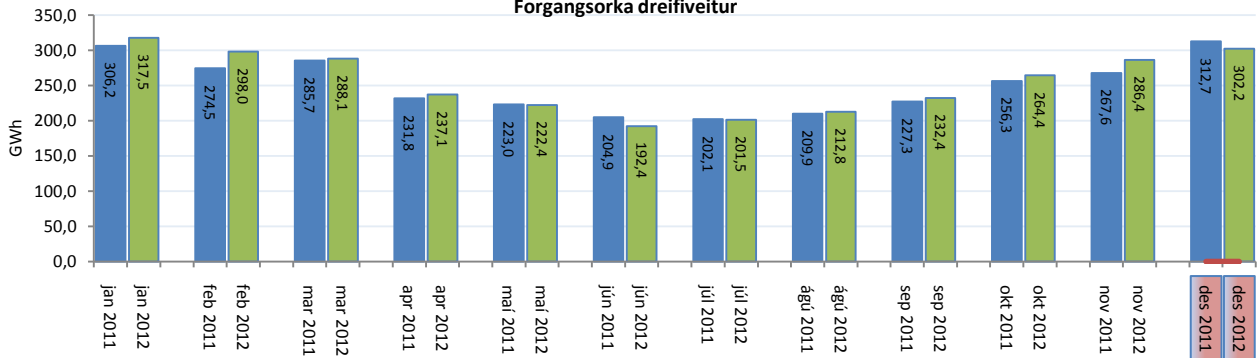
Flutningstöp



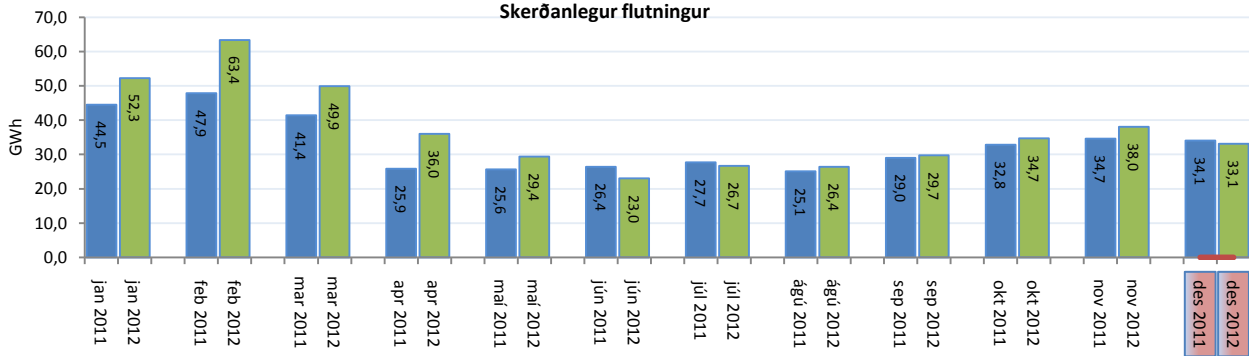
Heildartöp [GWh] :	32,1
Tapahlutfall af innmötun [%] :	2,1
Hámark tapa [MW] :	59,0
Lágmark tapa [MW] :	34,6
Grunntöp [MW] :	33,0

Flutt orka

Forgangsrorka dreifiveitur



Skerðanlegur flutningur



Orka stórnötendur

