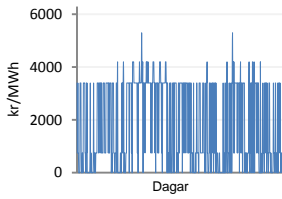
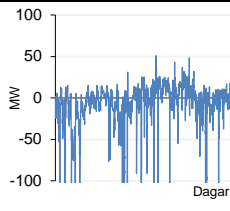


Jöfnunarorkuverð



Meðalverð [kr/MWh] :	1879
Hæsta verð [kr/MWh] :	5300
Lægsta verð [kr/MWh] :	0
Hlutfall upp-verðs [%] :	47,7
Hlutfall nið-verðs [%] :	52,3

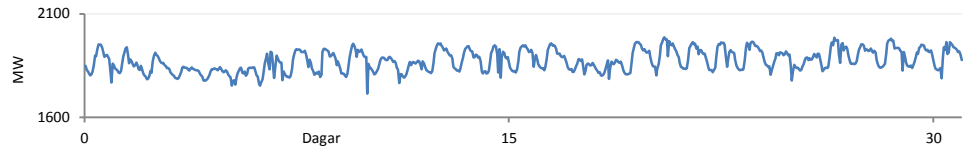
Reglunarafi



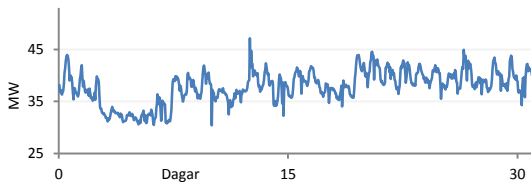
Meðalgildi [MW] :	-10,1
Hæsta gildi [MW] :	51,1
Lægsta gildi [MW] :	-337,0
Hlutfall uppr [%] :	36,1
Hlutfall niður [%] :	63,9

Innmötun

Orkuflutn. [GWh]	1393,8
Meðaltal [MW]	1873,4
Hámark [MW]	1985,9
Lágmark [MW]	1714,9



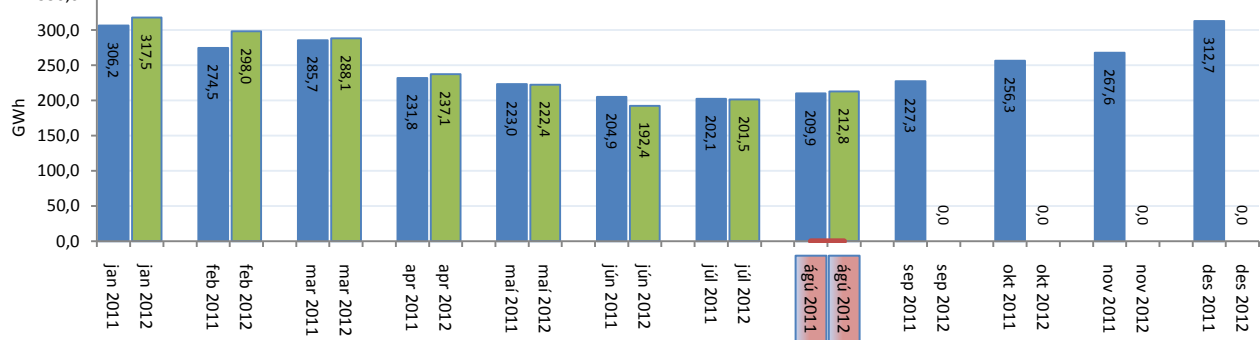
Flutningstöp



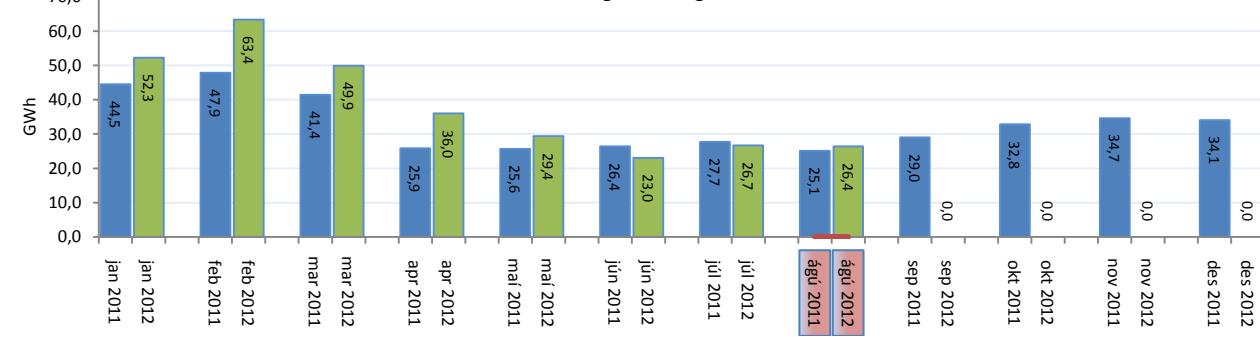
Heildartöp [GWh] :	28,1
Tapahlutfall af innmötun [%] :	2,0
Hámark tapa [MW] :	47,1
Lágmark tapa [MW] :	30,4
Grunntöp [MW] :	30,0

Flutt orka

Forgangsrorka dreifiveitur



Skerðanlegur flutningur



Orka stórnötendur

