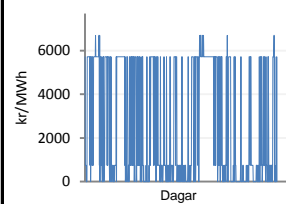


Mánaðarskýrsla Kerfisstjórnar og markaðar

Rekstrarskýrsla - Febrúar 2012

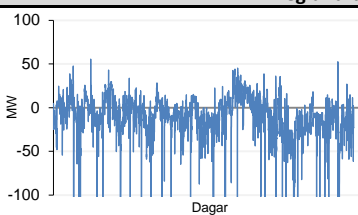


Jöfnunarorkuverð



Meðalverð [kr/MWh] :	2645
Hæsta verð [kr/MWh] :	6700
Lægsta verð [kr/MWh] :	0
Hlutfall upp-verðs [%] :	42,2
Hlutfall nið-verðs [%] :	57,8

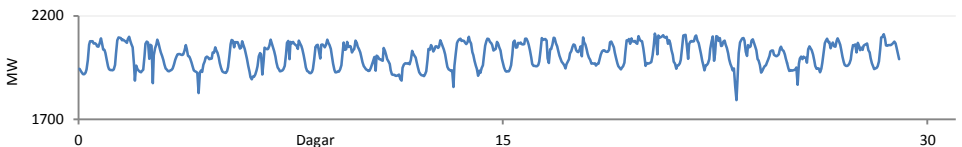
Reglunarafi



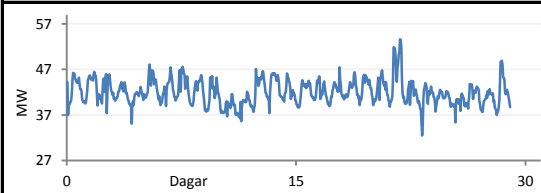
Meðalgildi [MW] :	-12,1
Hæsta gildi [MW] :	55,7
Lægsta gildi [MW] :	-440,5
Hlutfall uppr [%] :	30,0
Hlutfall niður [%] :	70,0

Innmötun

Orkuflutn. [GWh]	1399,8
Meðaltal [MW]	2011,2
Hámark [MW]	2114,9
Lágmark [MW]	1793,0



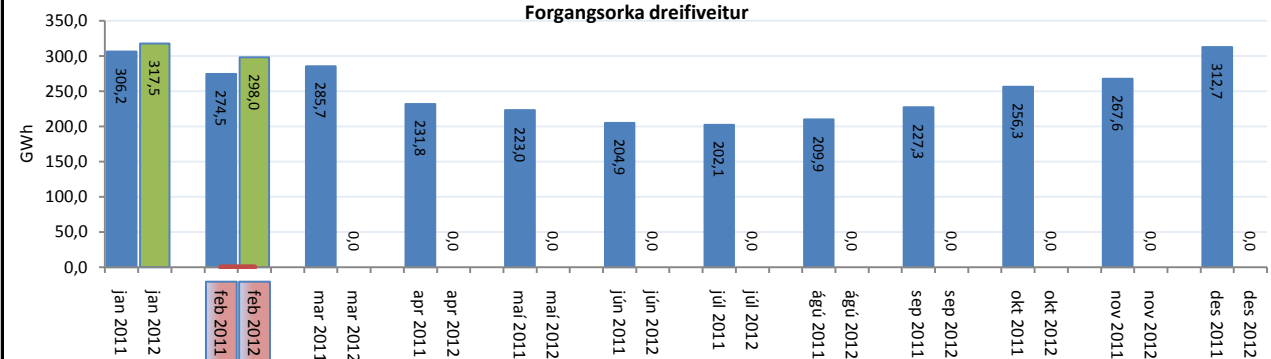
Flutningstöp



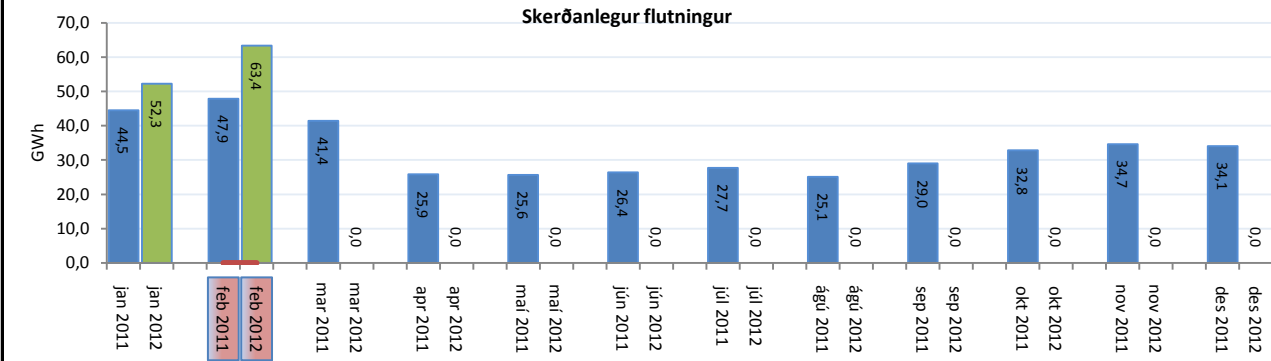
Heildartöp [GWh] :	29,3
Tapahlutfall af innmötun [%] :	2,1
Hámark tapa [MW] :	53,6
Lágmark tapa [MW] :	32,4
Grunntöp [MW] :	32,0

Flutt orka

Forgangsrorka dreifiveitur



Skerðanlegur flutningur



Orka stórnótendur

