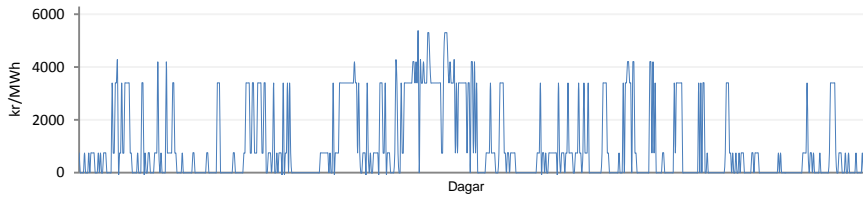


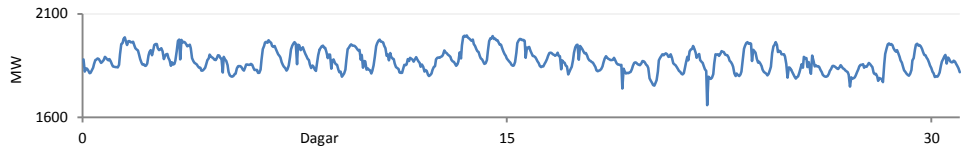
Jöfnunarorkuverð



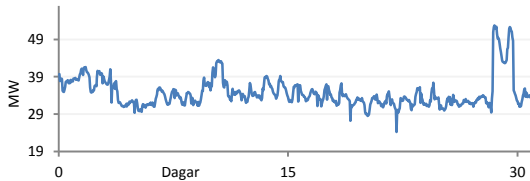
Meðalverð [kr/MWh] :	1025
Hæsta verð [kr/MWh] :	5300
Lægsta verð [kr/MWh] :	0
Hlutfall upp-verðs [%] :	22,8
Hlutfall nið-verðs [%] :	77,2

Innmötun

Orkuflutn. [GWh]	1396,0
Meðaltal [MW]	1876,3
Hámark [MW]	1995,3
Lágmark [MW]	1659,0



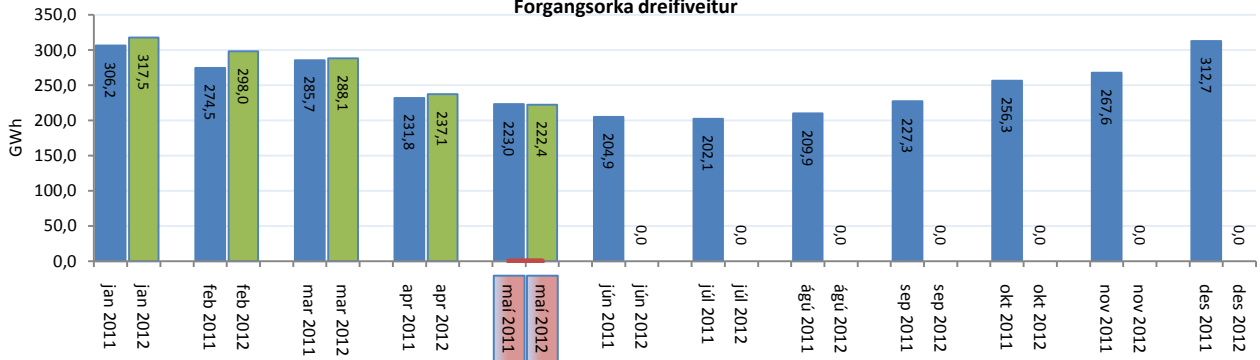
Flutningstöp



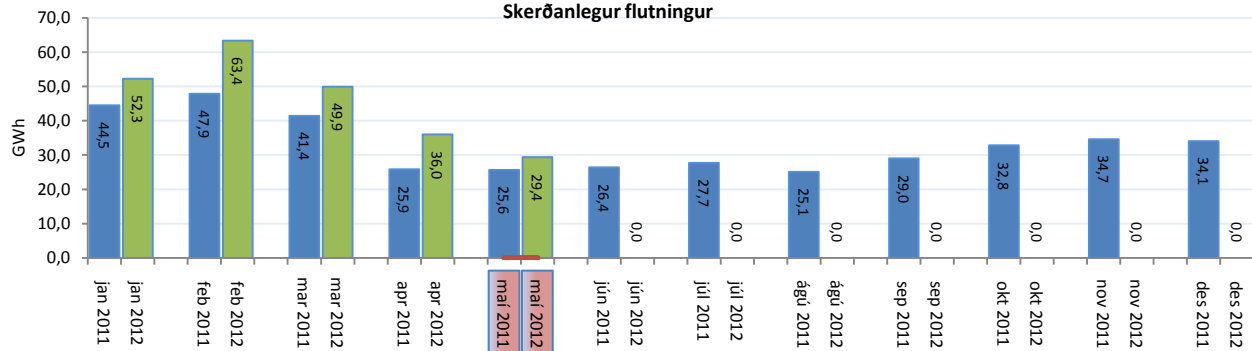
Heildartöp [GWh] :	25,8
Tapahlutfall af innmötun [%] :	1,8
Hámark tapa [MW] :	52,8
Lágmark tapa [MW] :	24,2
Grunntöp [MW] :	30,0

Flutt orka

Forgangsrorka dreifiveitur



Skerðanlegur flutningur



Orka stórnötendur

