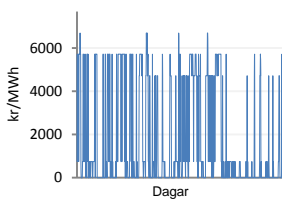
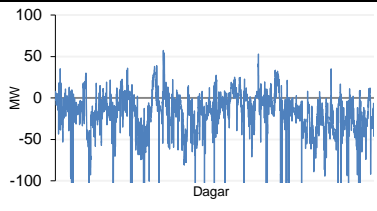


Jöfnunarorkuverð



Meðalverð [kr/MWh] :	1768
Hæsta verð [kr/MWh] :	6700
Lægsta verð [kr/MWh] :	0
Hlutfall upp-verðs [%] :	29,4
Hlutfall nið-verðs [%] :	70,6

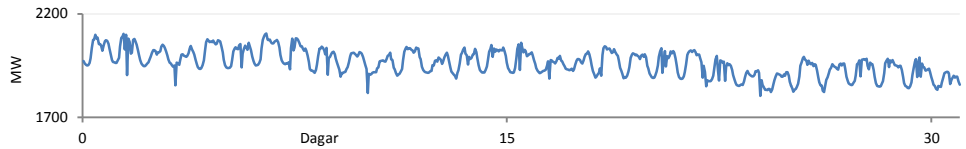
Reglunarafi



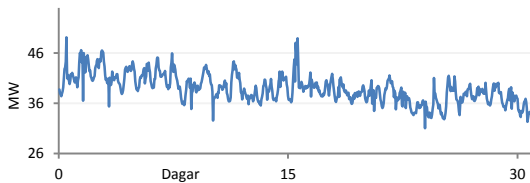
Meðalgildi [MW] :	-19,3
Hæsta gildi [MW] :	57,4
Lægsta gildi [MW] :	-369,4
Hlutfall uppr [%] :	18,5
Hlutfall niður [%] :	81,5

Innmötun

Orkuflutn. [GWh]	1460,2
Meðaltal [MW]	1962,6
Hámark [MW]	2105,1
Lágmark [MW]	1803,5



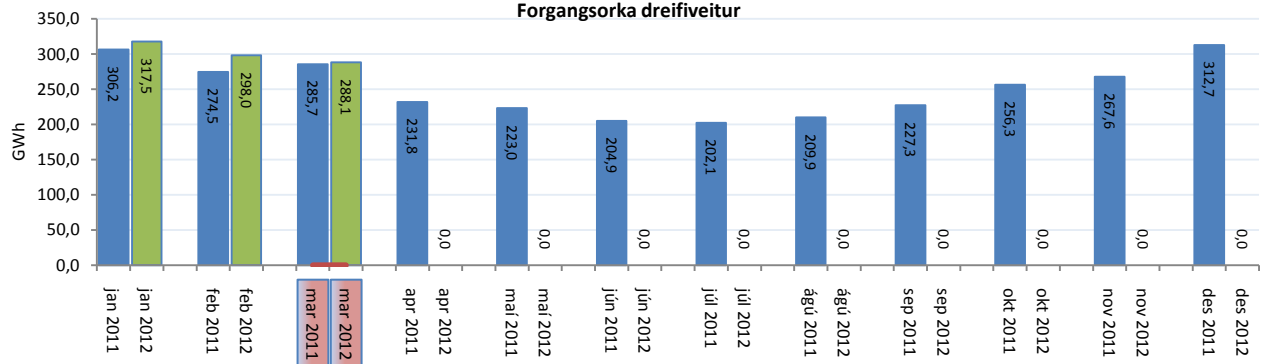
Flutningstöp



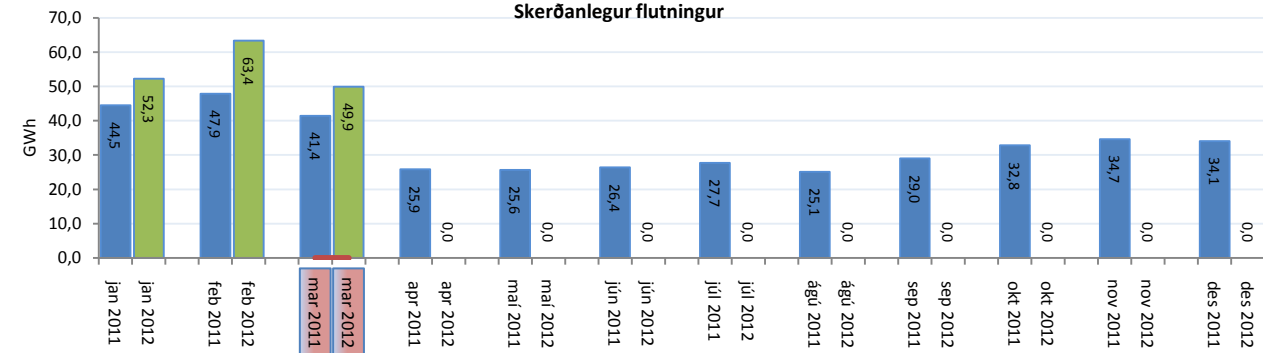
Heildartöp [GWh] :	29,0
Tapahlutfall af innmötun [%] :	2,0
Hámark tapa [MW] :	49,1
Lágmark tapa [MW] :	31,1
Grunntöp [MW] :	32,0

Flutt orka

Forgangsrorka dreifiveitur



Skerðanlegur flutningur



Orka stórnótendur

