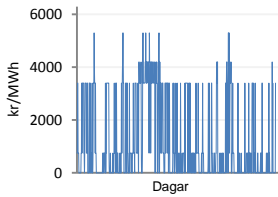
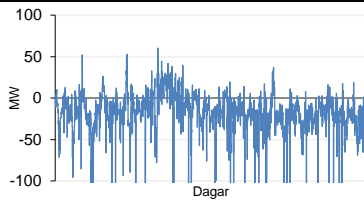


Jöfnunarorkuverð



Meðalverð [kr/MWh] :	1253
Hæsta verð [kr/MWh] :	5300
Lægsta verð [kr/MWh] :	0
Hlutfall upp-verðs [%] :	29,2
Hlutfall nið-verðs [%] :	70,8

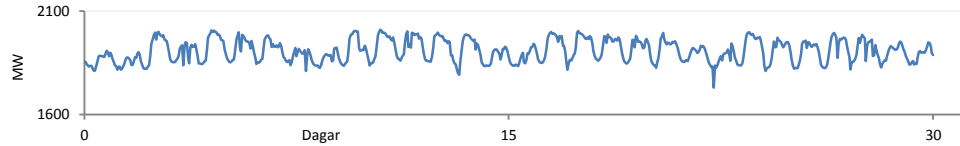
Reglunarafi



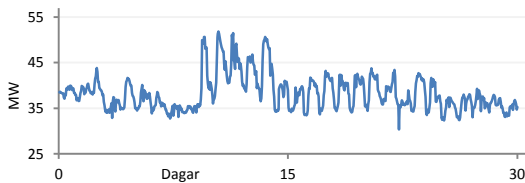
Meðalgildi [MW] :	-18,3
Hæsta gildi [MW] :	60,4
Lægsta gildi [MW] :	-380,2
Hlutfall uppr [%] :	18,1
Hlutfall niður [%] :	81,9

Innmötun

Orkuflutn. [GWh]	1373,4
Meðaltal [MW]	1907,5
Hámark [MW]	2008,9
Lágmark [MW]	1729,8



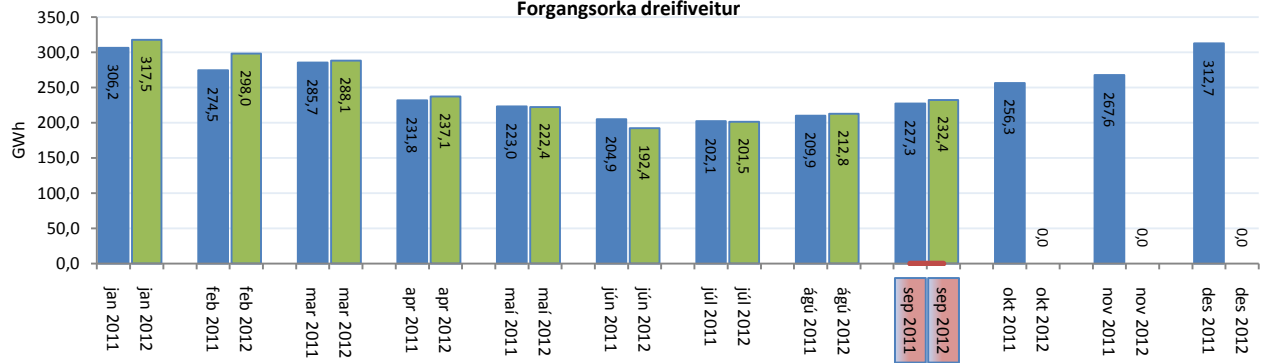
Flutningstöp



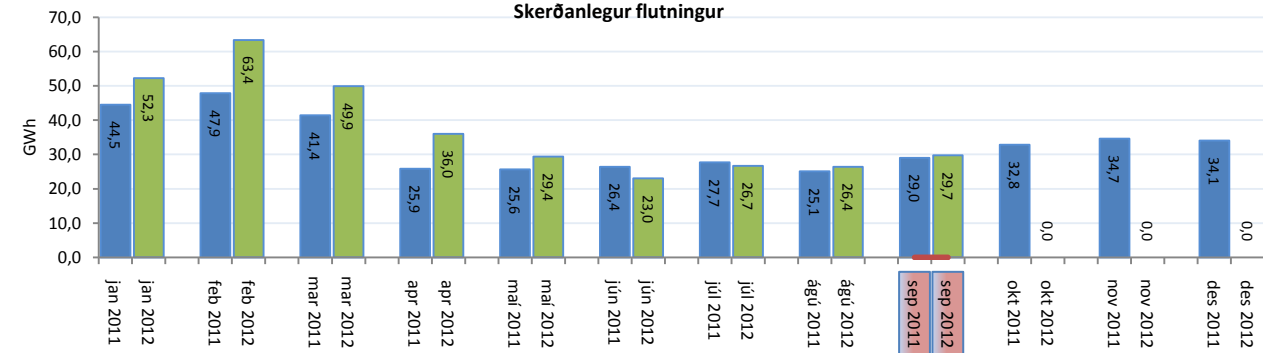
Heildartöp [GWh] :	27,6
Tapahlutfall af innmötun [%] :	2,0
Hámark tapa [MW] :	51,8
Lágmark tapa [MW] :	30,3
Grunntöp [MW] :	31,0

Flutt orka

Forgangsrorka dreifiveitur



Skerðanlegur flutningur



Orka stórnötendur

