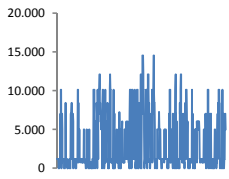
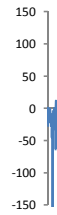


Jöfnunarorkuverð



Meðalverð [kr/MWst]:	3267
Hæsta verð [kr/MWst]:	14500
Lægsta verð [kr/MWst]:	0
Hlutfall upp-verðs [%]:	37,9%
Hlutfall nið-verðs [%]:	62,1%

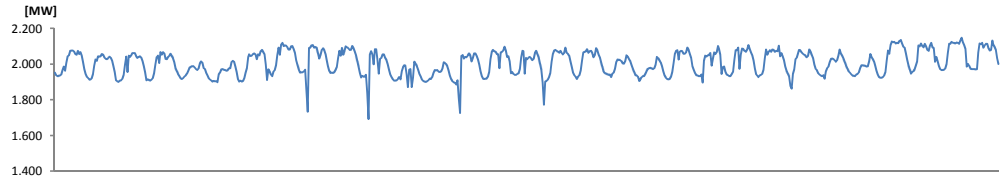
Reglunarafl



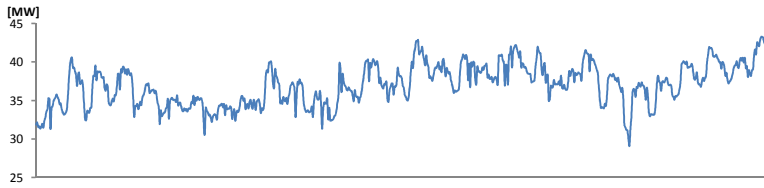
Meðalgildi [MW]:	-15,73
Hæsta gildi [MW]:	51,45
Lægsta gildi [MW]:	-394,43
Hlutfall uppr [%]:	24,12%
Hlutfall niður [%]:	75,88%

Innmötun

Orkuflutn. [GWst]	1.491,9
Meðaltal [MW]:	2.005,2
Hámark [MW]:	2.147,7
Lágmark [MW]:	1.691,4



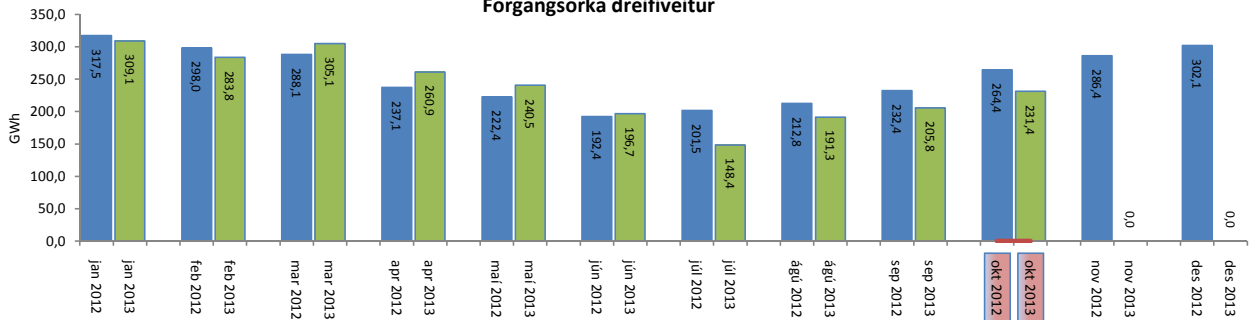
Flutningstöp



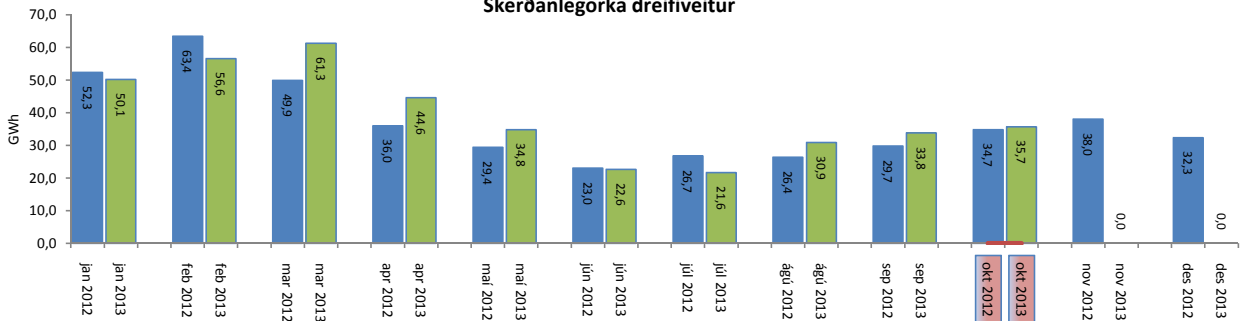
Heildartöp [GWst]:	30,12
Tapahlutfall af innmötun	2,02%
Hámark tapa [MW]:	49,38
Lágmark tapa [MW]:	26,08
Grunntöp [MW]:	31

Flutt orka

Forgangsorika dreifiveitur



Skerðanlegorika dreifiveitur



Orka Stórnotendur

