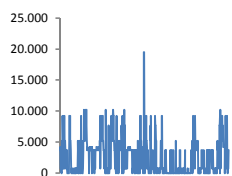
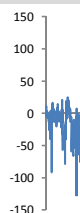


Jöfnunarorkuverð



Meðalverð [kr/MWst]:	2607
Hæsta verð [kr/MWst]:	19500
Lægsta verð [kr/MWst]:	0
Hlutfall upp-verðs [%]:	45,4%
Hlutfall nið-verðs [%]:	54,6%

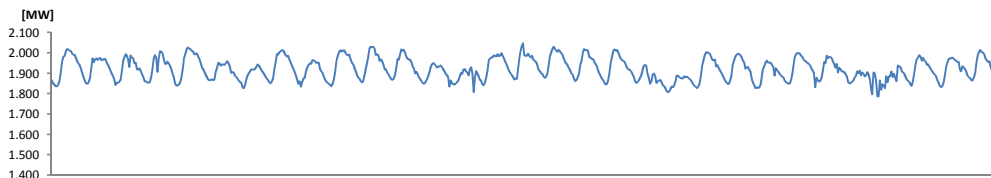
Reglunarafl



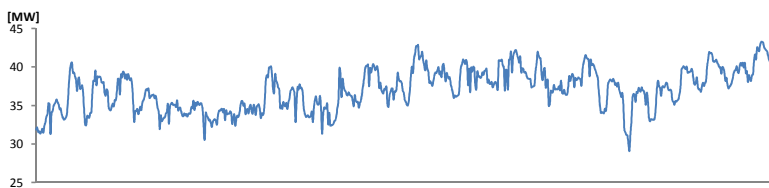
Meðalgildi [MW]:	-9,78
Hæsta gildi [MW]:	105,86
Lægsta gildi [MW]:	-176,86
Hlutfall uppr [%]:	33,73%
Hlutfall niður [%]:	66,27%

Innmötun

Orkuflutn. [GWst]	1.428,4
Meðaltal [MW]:	1.920,0
Hámark [MW]:	2.046,0
Lágmark [MW]:	1.785,6



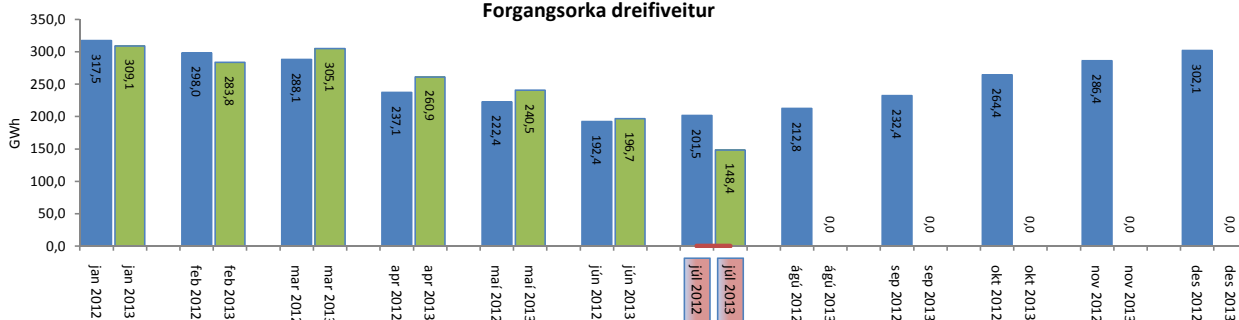
Flutningstöp



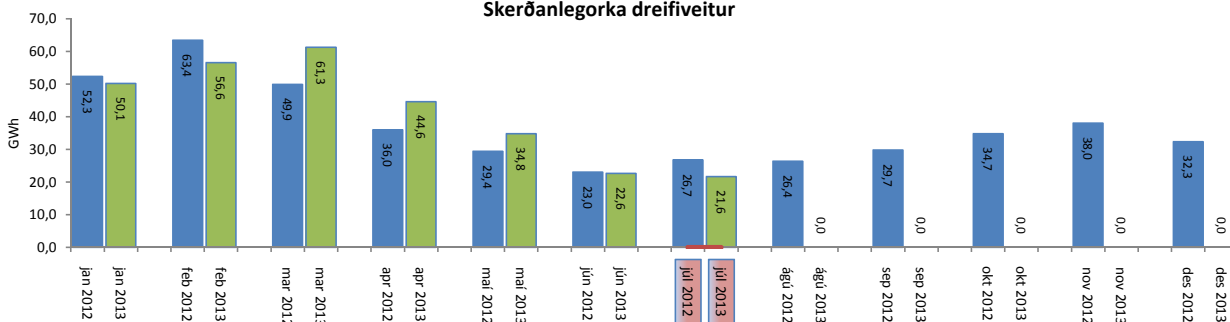
Heildartöp [GWst]:	29,00
Tapahlutfall af innmötun	2,03%
Hámark tapa [MW]:	60,03
Lágmark tapa [MW]:	31,31
Grunntöp [MW]:	30

Flutt orka

Forgangsorika dreifiveitur



Skerðanlegorika dreifiveitur



Orka Stórnotendur

