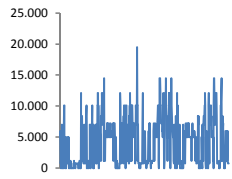
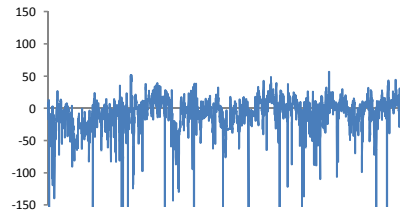


Jöfnunarorkuverð



Meðalverð [kr/MWst]:	4146
Hæsta verð [kr/MWst]:	19500
Lægsta verð [kr/MWst]:	0
Hlutfall upp-verðs [%]:	51,1%
Hlutfall nið-verðs [%]:	48,9%

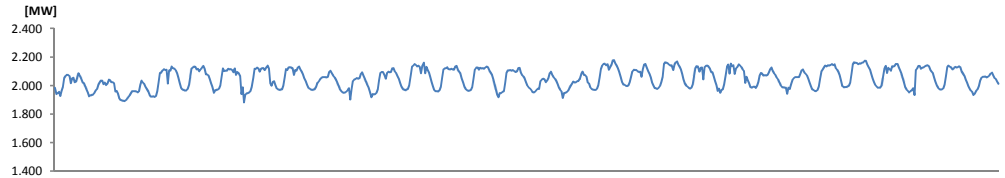
Reglunarafl



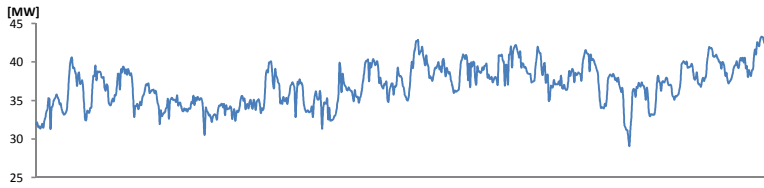
Meðalgildi [MW]:	-8,30
Hæsta gildi [MW]:	56,46
Lægsta gildi [MW]:	-1459,05
Hlutfall uppr [%]:	41,42%
Hlutfall niður [%]:	58,58%

Innmötun

Orkuflutn. [GWst]:	1.475,1
Meðaltal [MW]:	2.048,7
Hámark [MW]:	2.177,4
Lágmark [MW]:	1.881,9



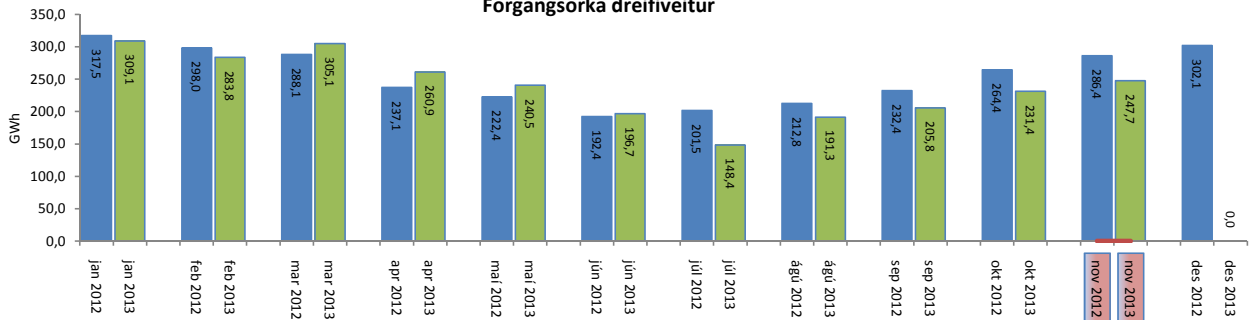
Flutningstöp



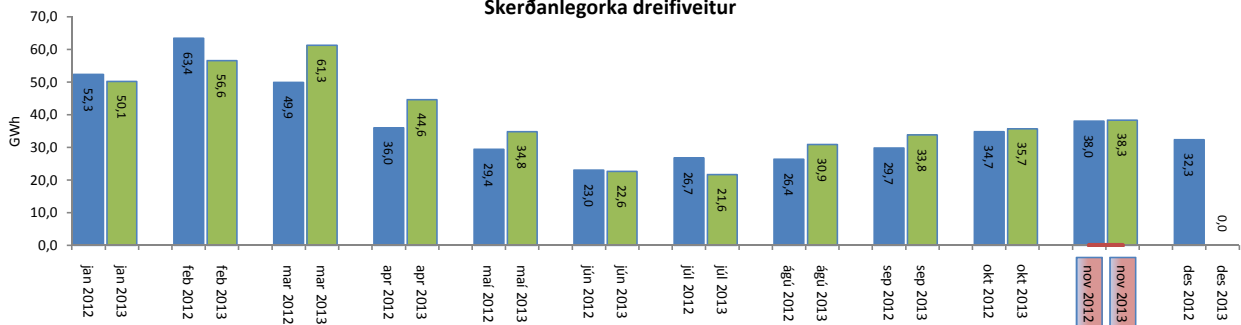
Heildartöp [GWst]:	30,81
Tapahlutfall af innmötun	2,09%
Hámark tapa [MW]:	50,08
Lágmark tapa [MW]:	33,57
Grunntöp [MW]:	32

Flutt orka

Forgangsorta dreifiveitur



Skerðanlegortaka dreifiveitur



Orka Stórnotendur

