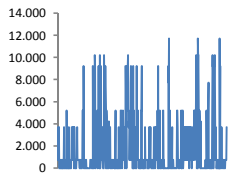
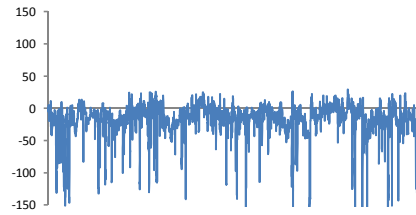


Jöfnunarorkuverð



Meðalverð [kr/MWst]:	1765
Hæsta verð [kr/MWst]:	11700
Lægsta verð [kr/MWst]:	0
Hlutfall upp-verðs [%]:	27,3%
Hlutfall nið-verðs [%]:	72,7%

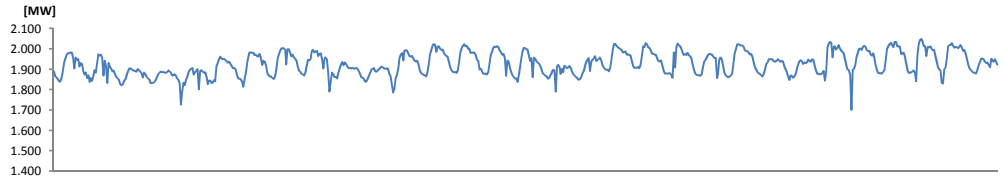
Reglunarafl



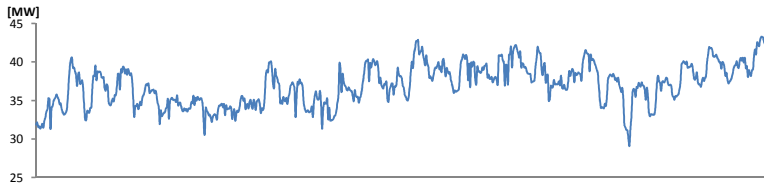
Meðalgildi [MW]:	-17,19
Hæsta gildi [MW]:	29,29
Lægsta gildi [MW]:	-1476,74
Hlutfall uppr [%]:	18,08%
Hlutfall niður [%]:	81,92%

Innmötun

Orkuflutn. [GWst]:	1.432,4
Meðaltal [MW]:	1.925,3
Hámark [MW]:	2.048,3
Lágmark [MW]:	1.700,2



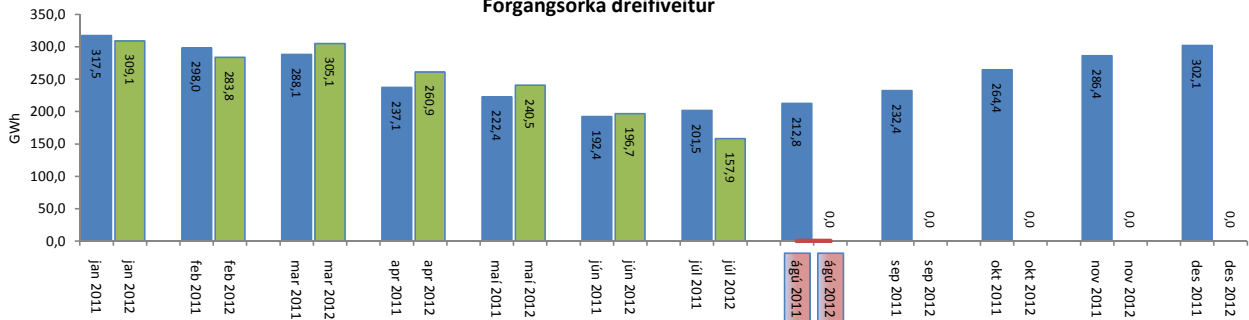
Flutningstöp



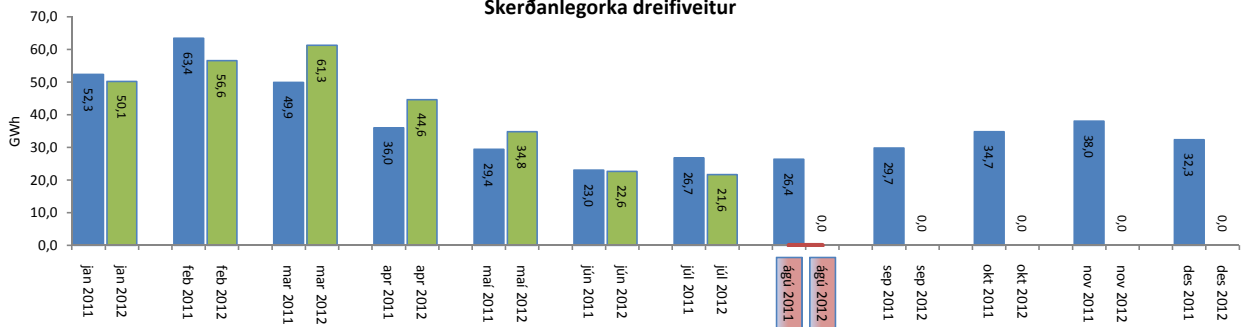
Heildartöp [GWst]:	30,38
Tapahlutfall af innmötun	2,12%
Hámark tapa [MW]:	52,22
Lágmark tapa [MW]:	27,33
Grunntöp [MW]:	30

Flutt orka

Forgangsorika dreifiveitur



Skerðanlegorika dreifiveitur



Orka Stórnotendur

