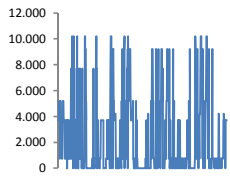
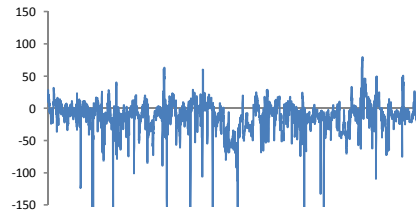


Jöfnunarorkuverð



Meðalverð [kr/MWst]:	2440
Hæsta verð [kr/MWst]:	10200
Lægsta verð [kr/MWst]:	0
Hlutfall upp-verðs [%]:	37,8%
Hlutfall nið-verðs [%]:	62,2%

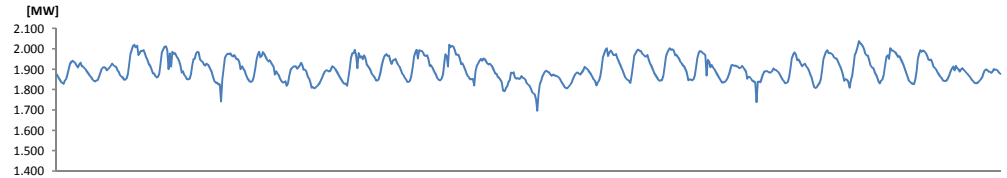
Reglunarafl



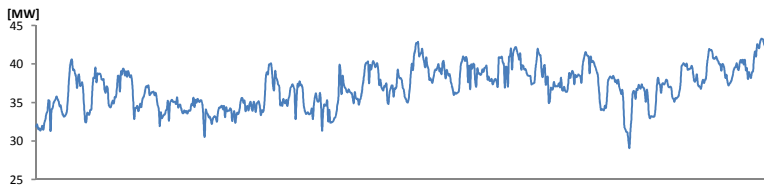
Meðalgildi [MW]:	-12,16
Hæsta gildi [MW]:	79,16
Lægsta gildi [MW]:	-354,09
Hlutfall uppr [%]:	26,59%
Hlutfall niður [%]:	73,41%

Innmötun

Orkuflutn. [GWst]:	1.369,1
Meðaltal [MW]:	1.901,6
Hámark [MW]:	2.037,3
Lágmark [MW]:	1.696,7



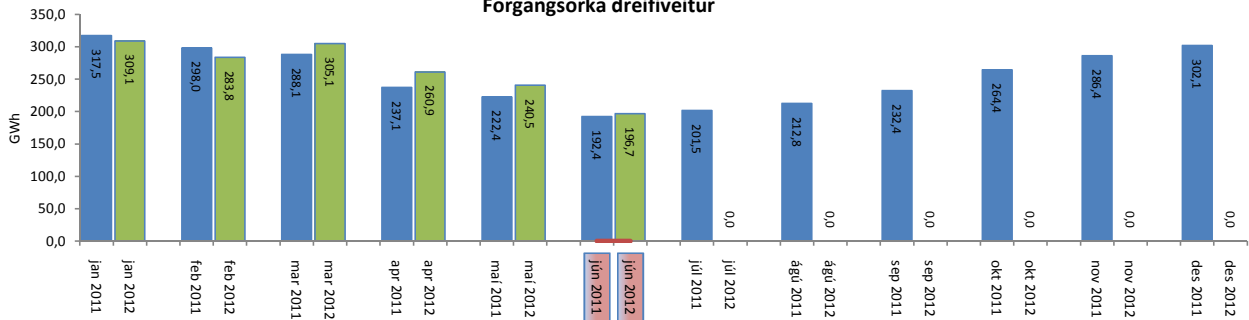
Flutningstöp



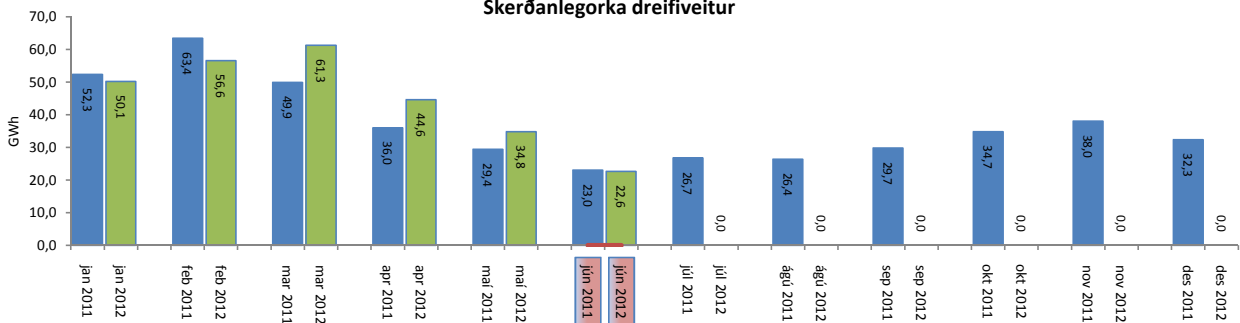
Heildartöp [GWst]:	26,69
Tapahlutfall af innmötun	1,95%
Hámark tapa [MW]:	54,60
Lágmark tapa [MW]:	29,92
Grunntöp [MW]:	47

Flutningsorka

Forgangsorka dreifiveitur



Skerðanlegorka dreifiveitur



Orka Stórnotendur

