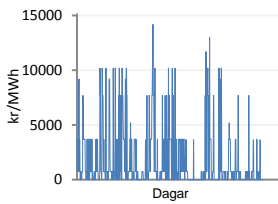
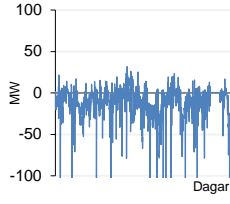


Jöfnunarorkuverð



Meðalverð [kr/MWh] :	1828
Hæsta verð [kr/MWh] :	14200
Lægsta verð [kr/MWh] :	0
Hlutfall upp-verðs [%] :	28,3
Hlutfall nið-verðs [%] :	71,7

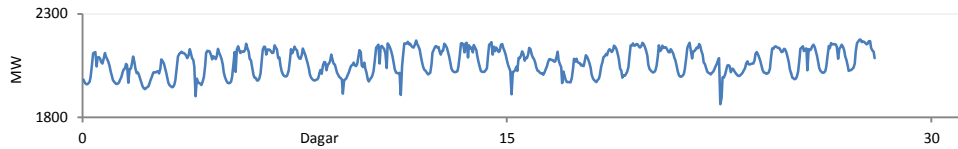
Reglunarafi



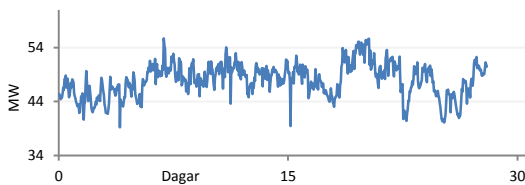
Meðalgildi [MW] :	-18,1
Hæsta gildi [MW] :	54,4
Lægsta gildi [MW] :	-442,6
Hlutfall uppr [%] :	22,3
Hlutfall niður [%] :	77,7

Innmötun

Orkuflutn. [GWh]	1388,7
Meðaltal [MW]	2066,5
Hámark [MW]	2175,5
Lágmark [MW]	1863,1



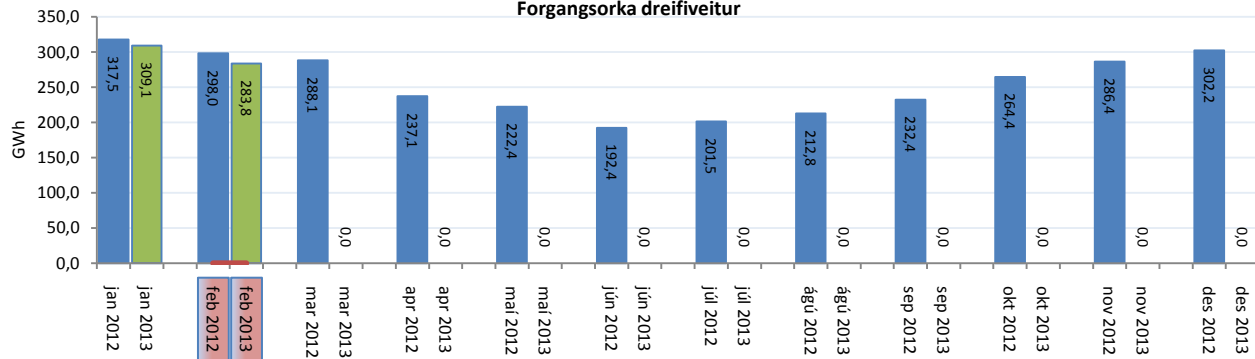
Flutningstöp



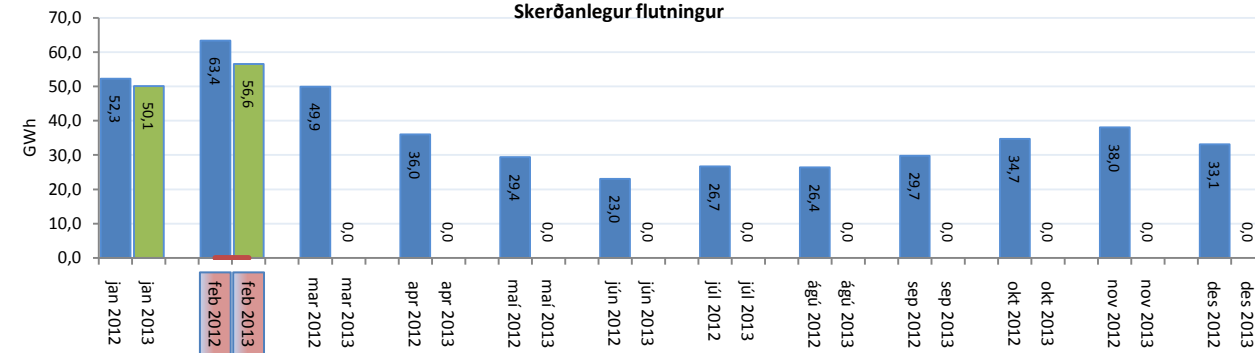
Heildartöp [GWh] :	32,2
Tapahlutfall af innmötun [%] :	2,3
Hámark tapa [MW] :	55,7
Lágmark tapa [MW] :	39,2
Grunntöp [MW] :	32,0

Flutt orka

Forgangsrorka dreifiveitur



Skerðanlegur flutningur



Orka stórnötendur

