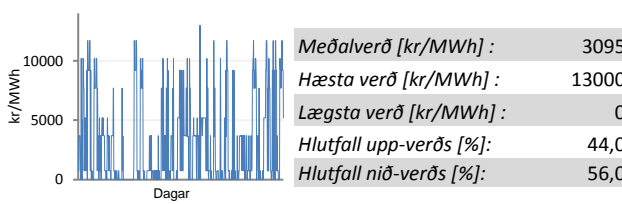
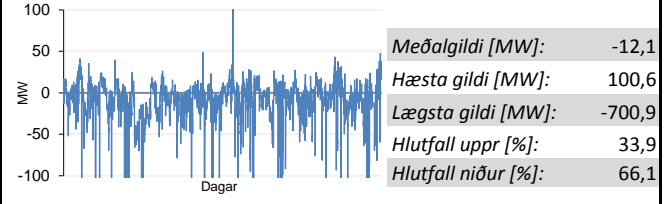


Jöfnunarorkuverð

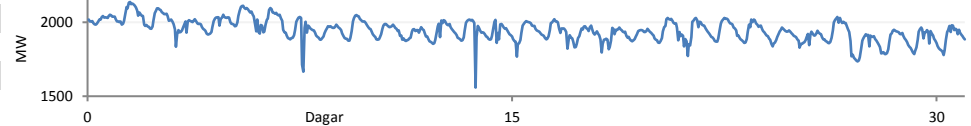


Reglunarafi

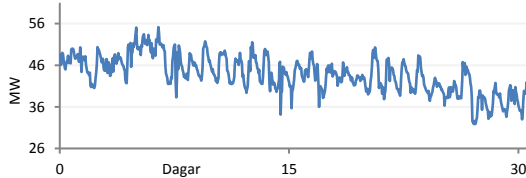


Innmötun

Orkuflutn. [GWh]	1447,3
Meðaltal [MW]:	1945,3
Hámark [MW]:	2137,0
Lágmark [MW]:	1558,7



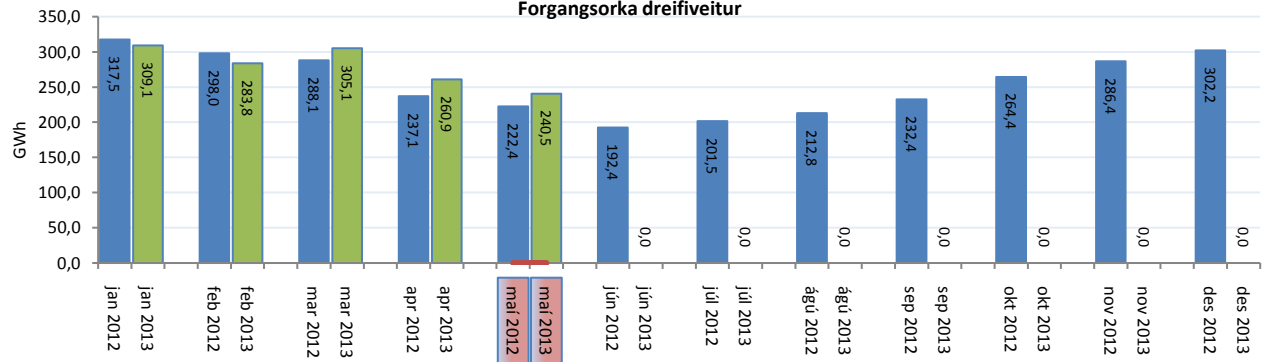
Flutningstöp



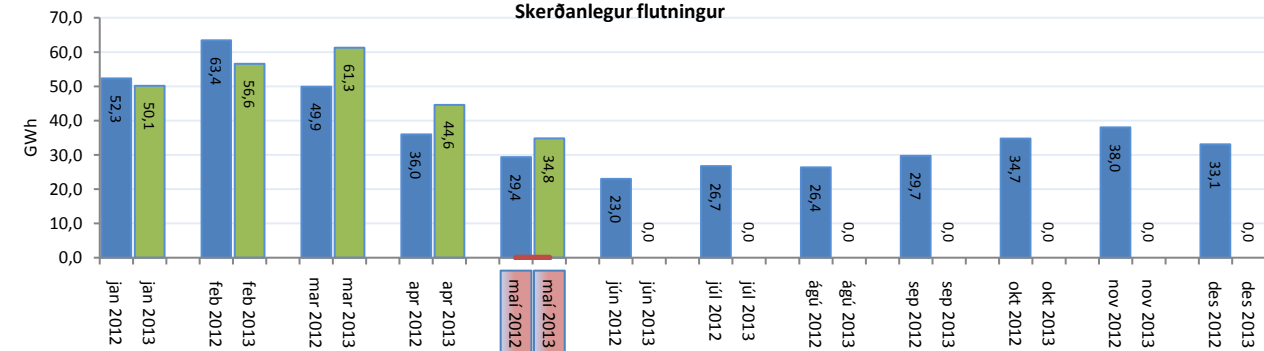
Heildartöp [GWh]:	32,6
Tapahlutfall af innmötun [%]:	2,2
Hámark tapa [MW]:	55,1
Lágmark tapa [MW]:	31,8
Grunntöp [MW]:	30,0

Flutt orka

Forgangsrorka dreifiveitur



Skerðanlegur flutningur



Orka stórnötendur

