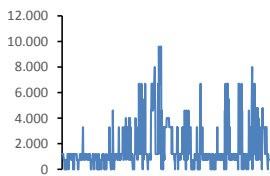
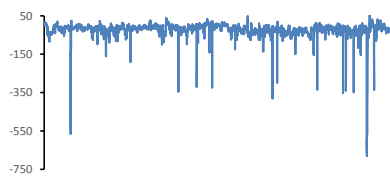


Jöfnunarorkuverð [kr/MWst]



Meðalverð:	1708
Hæsta verð:	9600
Lægsta verð:	0
Hlutfall upp-verðs:	22,8%
Hlutfall nið-verðs:	77,2%

Reglunarafli [MW]



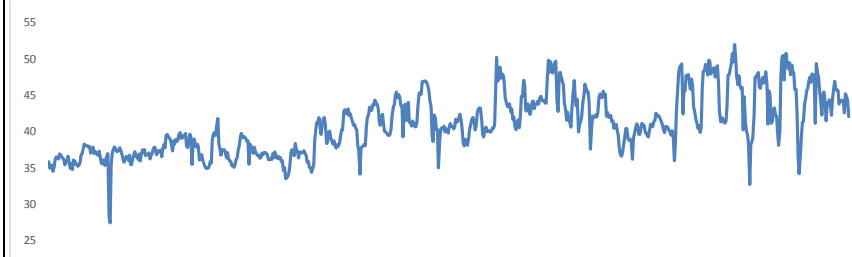
Meðalgildi:	-23
Hæsta gildi:	73
Lægsta gildi:	-680
Hlutfall uppr:	13,24%
Hlutfall niður:	86,76%

Innmötun

Orkuflutn. [GWst]	1.458,0
Meðaltal [MW]:	1.959,7
Hámark [MW]:	2.084,7
Lágmark [MW]:	1.412,9



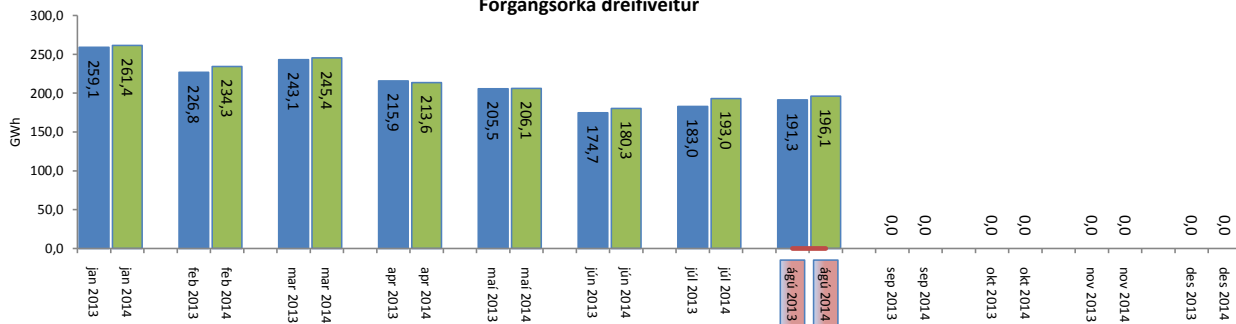
Flutningstöp



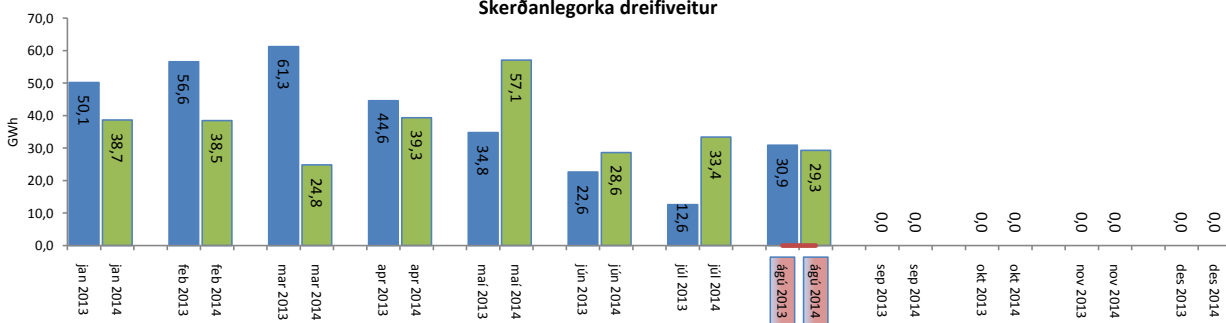
Heildartöp [GWst]:	30,46
Tapahlutfall af innmötun	2,09%
Hámark tapa [MW]:	51,96
Lágmark tapa [MW]:	27,40
Grunntöp [MW]:	33
Pöntuð viðbótartöpu [GWst]:	4,88
Nýtt af viðbótartöpum ársfj. mán.:	31,44%
Nýtt af viðbótartöpum ársfj. heild:	72,51%
Frávik frá pöntun:	5,24%

Flutt orka

Forgangorka dreifiveitur



Skerðanlegorka dreifiveitur



Orka Stórnotendur

