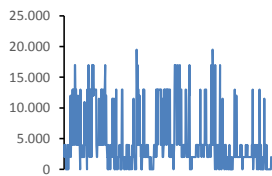
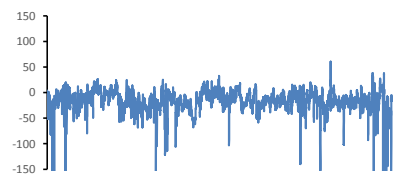


Jöfnunarorkuverð [kr/MWst]



Meðalverð:	4746
Hæsta verð:	19500
Lægsta verð:	0
Hlutfall upp-verðs:	21,5%
Hlutfall nið-verðs:	78,5%

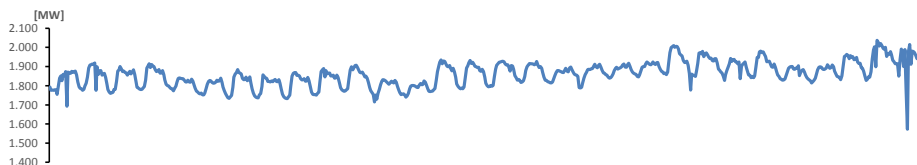
Reglunarafi [MW]



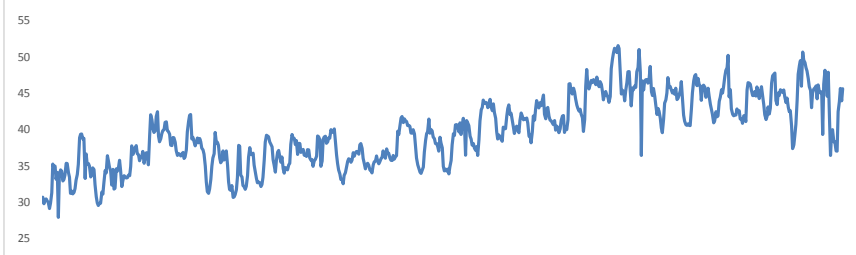
Meðalgildi:	-18
Hæsta gildi:	61
Lægsta gildi:	-551
Hlutfall uppr:	16,98%
Hlutfall niður:	83,02%

Innmötun

Orkuflutn. [GWst]	1.339,6
Meðaltal [MW]:	1.860,6
Hámark [MW]:	2.037,1
Lágmark [MW]:	1.572,6



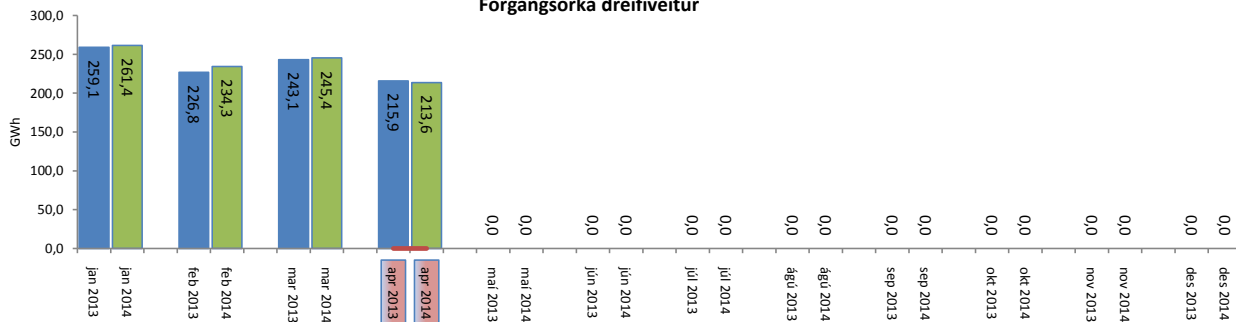
Flutningstöp



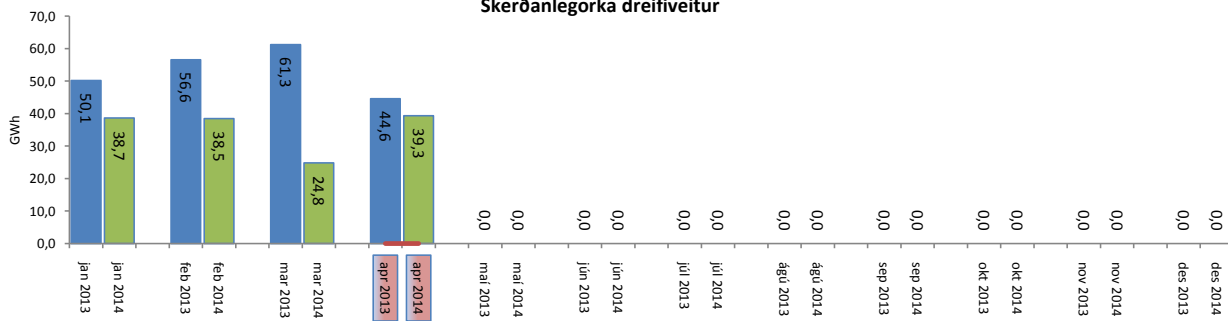
Heildartöp [GWst]:	28,58
Tapahlutfall af innmötun	2,13%
Hámark tapa [MW]:	51,54
Lágmark tapa [MW]:	27,89
Grunntöp [MW]:	37
Pöntuð viðbótartöpu [GWst]:	3,60
Nýtt af viðbótartöpum ársfj. mán.:	22,83%
Nýtt af viðbótartöpum ársfj. heild:	22,83%
Frávik frá pöntun:	8,59%

Flutt orka

Forgangorka dreifiveitur



Skerðanlegorka dreifiveitur



Orka Stórnotendur

