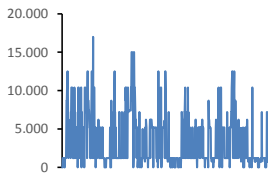
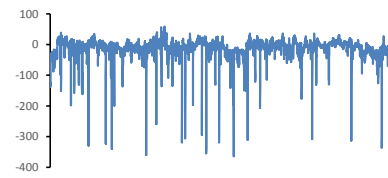


Jöfnunarorkuverð [kr/MWst]



Meðalverð:	3498
Hæsta verð:	17000
Lægsta verð:	0
Hlutfall upp-verðs:	0,0%
Hlutfall nið-verðs:	100,0%

Reglunarafli [MW]



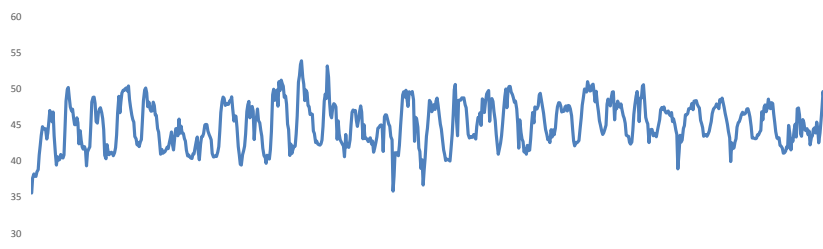
Meðalgildi:	-13
Hæsta gildi:	59
Lægsta gildi:	-364
Hlutfall uppr:	31,04%
Hlutfall niður:	68,96%

Innmötun

Orkuflutn. [GWst]	1.582,1
Meðaltal [MW]:	2.126,5
Hámark [MW]:	2.253,4
Lágmark [MW]:	1.877,1



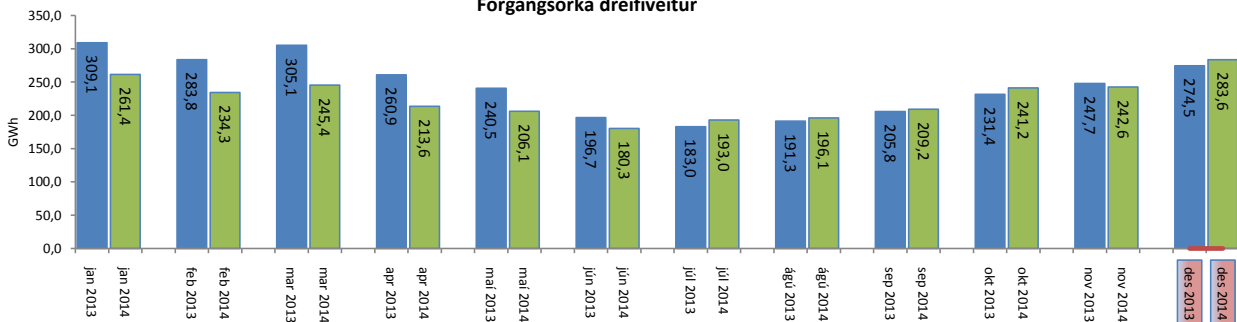
Flutningstöp



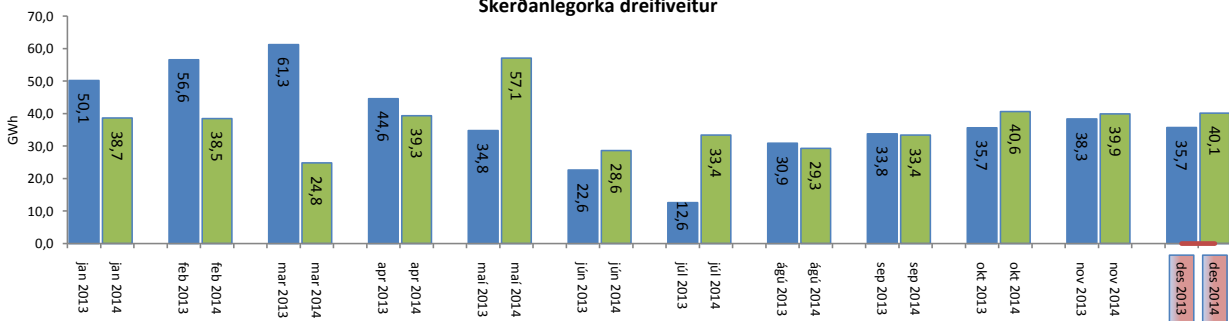
Heildartöp [GWst]:	33,59
Tapahlutfall af innmötun	2,12%
Hámark tapa [MW]:	53,92
Lágmark tapa [MW]:	35,58
Grunntöp [MW]:	37
Pöntuð viðbótartöpum [GWst]:	5,87
Nýtt af viðbótartöpum ársfj. mán.:	48,11%
Nýtt af viðbótartöpum ársfj. heild:	117,00%
Frávik frá pöntun:	3,34%

Flutt orka

Forgangsorka dreifiveitur



Skerðanlegorka dreifiveitur



Orka Stórnotendur

