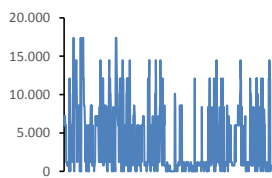
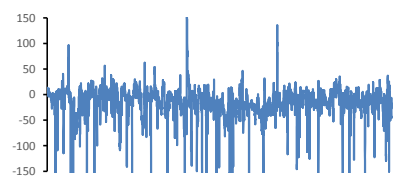


Jöfnunarorkuverð [kr/MWst]



Meðalverð:	3938
Hæsta verð:	17400
Lægsta verð:	0
Hlutfall upp-verðs:	39,2%
Hlutfall nið-verðs:	60,8%

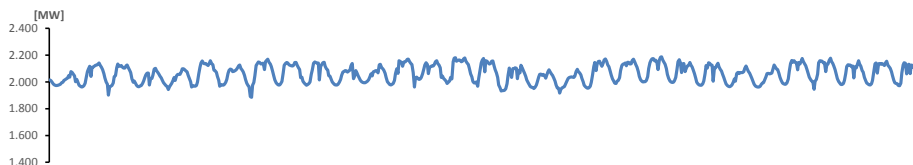
Reglunarafi [MW]



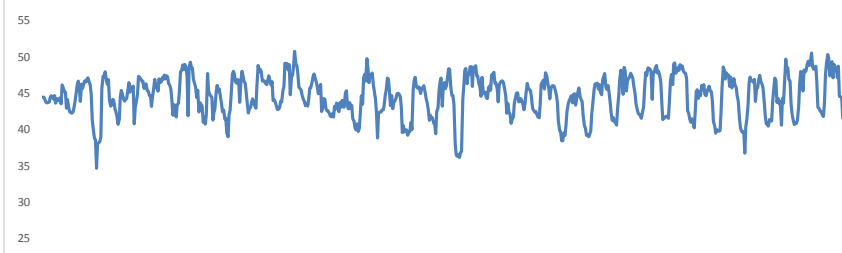
Meðalgildi:	-16
Hæsta gildi:	154
Lægsta gildi:	-340
Hlutfall uppr:	24,23%
Hlutfall niður:	75,77%

Innmötun

Orkuflutn. [GWst]	1.534,5
Meðaltal [MW]:	2.062,5
Hámark [MW]:	2.187,2
Lágmark [MW]:	1.884,8



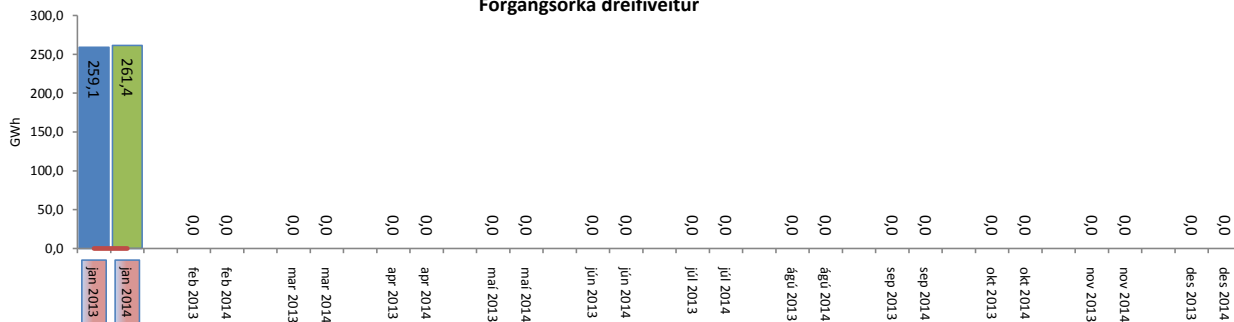
Flutningstöp



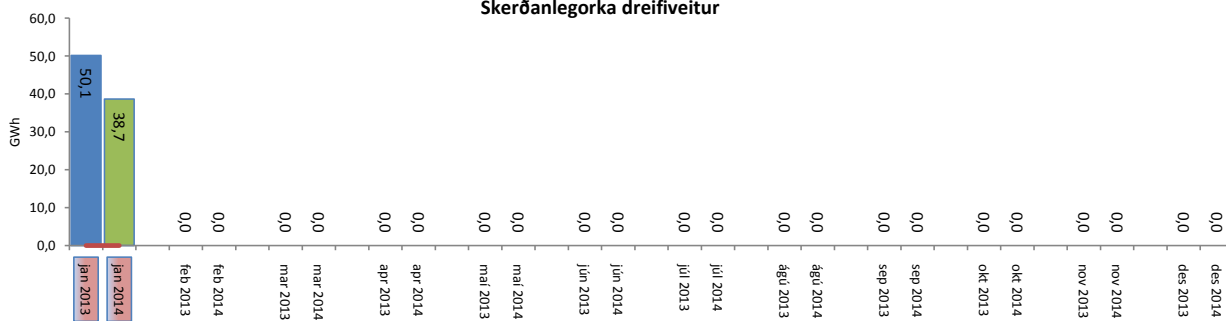
Heildartöp [GWst]:	33,21
Tapahlutfall af innmötun	2,16%
Hámark tapa [MW]:	50,75
Lágmark tapa [MW]:	34,65
Grunntöp [MW]:	39
Pöntuð viðbótartöp [GWst]:	4,33
Nýtt af viðbótartöpum ársfj. mán.:	28,94%
Nýtt af viðbótartöpum ársfj. heild:	28,94%
Frávik frá pöntun:	4,10%

Flutt orka

Forgangorka dreifiveitur



Skerðanlegorka dreifiveitur



Orka Stórnotendur

