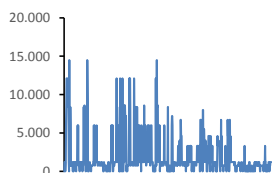
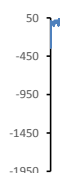


Jöfnunarorkuverð [kr/MWst]



| | |
|---------------------|-------|
| Meðalverð: | 1989 |
| Hæsta verð: | 14500 |
| Lægsta verð: | 0 |
| Hlutfall upp-verðs: | 22,3% |
| Hlutfall nið-verðs: | 77,7% |

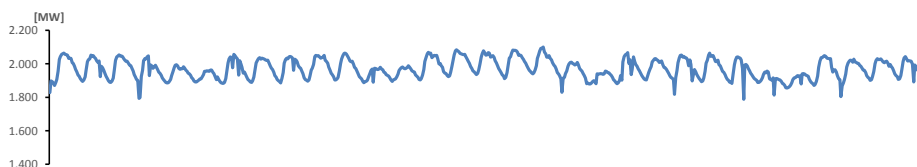
Reglunarafli [MW]



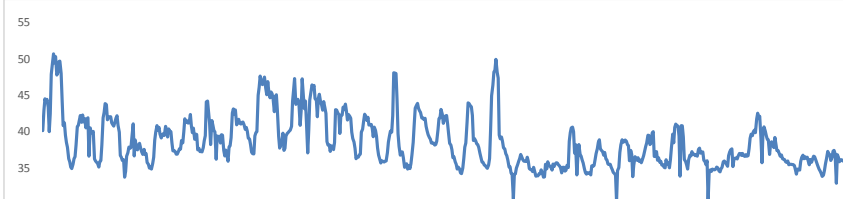
| | |
|-----------------|--------|
| Meðalgildi: | -6 |
| Hæsta gildi: | 83 |
| Lægsta gildi: | -1.518 |
| Hlutfall uppr: | 50,28% |
| Hlutfall niður: | 49,72% |

Innmötun

| | |
|-------------------|---------|
| Orkuflutn. [GWst] | 1.464,8 |
| Meðaltal [MW]: | 1.968,9 |
| Hámark [MW]: | 2.100,0 |
| Lágmark [MW]: | 1.787,9 |



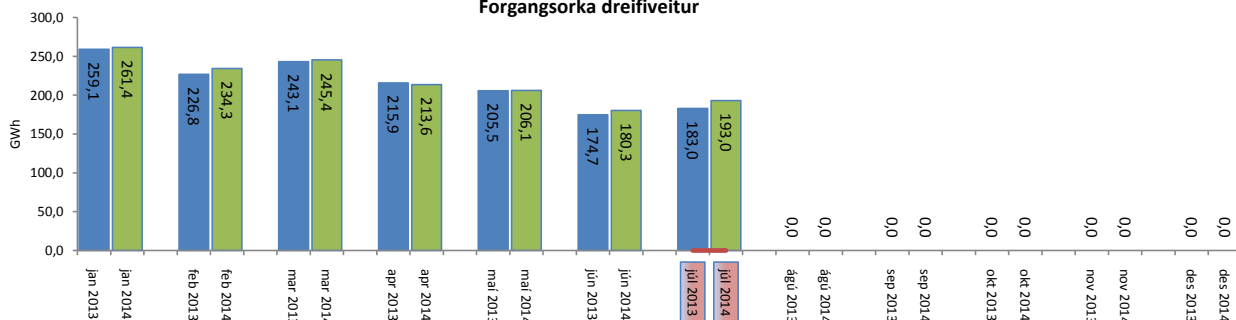
Flutningstöp



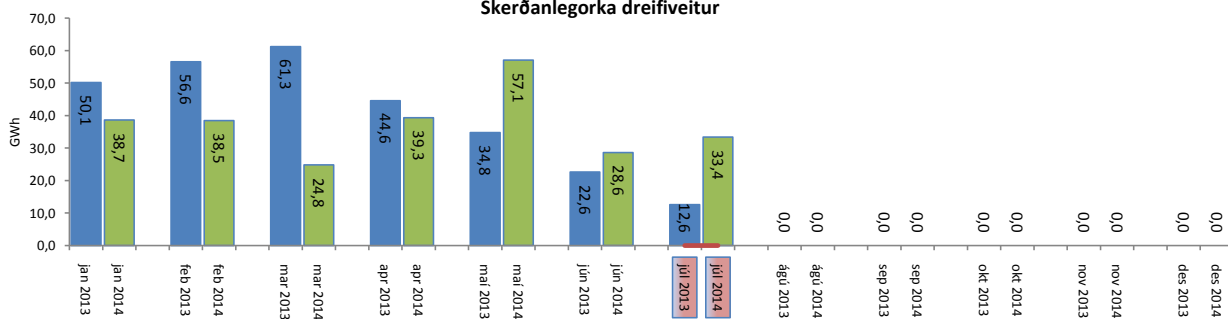
| | |
|-------------------------------------|--------|
| Heildartöp [GWst]: | 28,71 |
| Tapahlutfall af innmötun | 1,96% |
| Hámark tapa [MW]: | 50,68 |
| Lágmark tapa [MW]: | 30,38 |
| Grunntöp [MW]: | 31 |
| Pöntuð viðbótartöp [GWst]: | 6,37 |
| Nýtt af viðbótartöpum ársfj. mán.: | 41,07% |
| Nýtt af viðbótartöpum ársfj. heild: | 41,07% |
| Frávik frá pöntun: | 7,39% |

Flutt orka

Forgangsorka dreifiveitur



Skerðanlegorka dreifiveitur



Orka Stórnotendur

