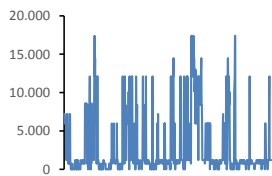
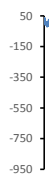


Jöfnunarorkuverð [kr/MWst]



Meðalverð:	2820
Hæsta verð:	17400
Lægsta verð:	0
Hlutfall upp-verðs:	24,3%
Hlutfall nið-verðs:	75,7%

Reglunarafi [MW]



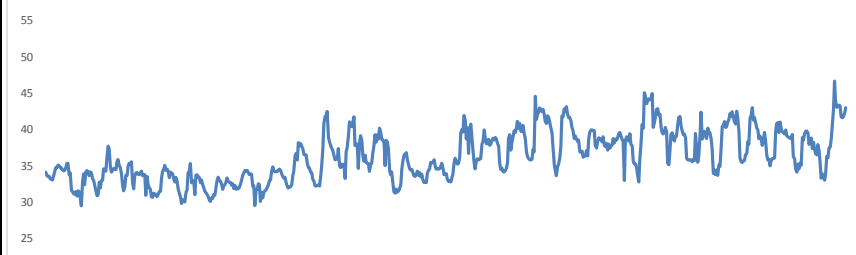
Meðalgildi:	-26
Hæsta gildi:	58
Lægsta gildi:	-767
Hlutfall uppr:	24,71%
Hlutfall niður:	75,29%

Innmötun

Orkuflutn. [GWst]	1.387,7
Meðaltal [MW]:	1.927,4
Hámark [MW]:	2.057,5
Lágmark [MW]:	1.719,6



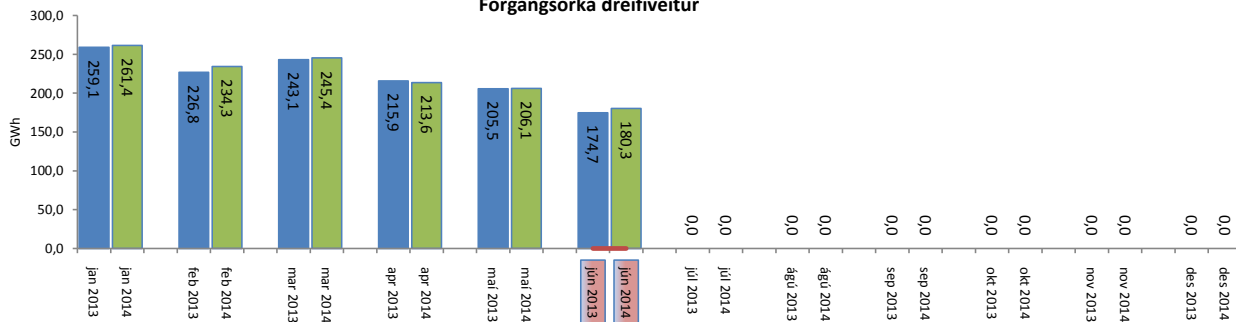
Flutningstöp



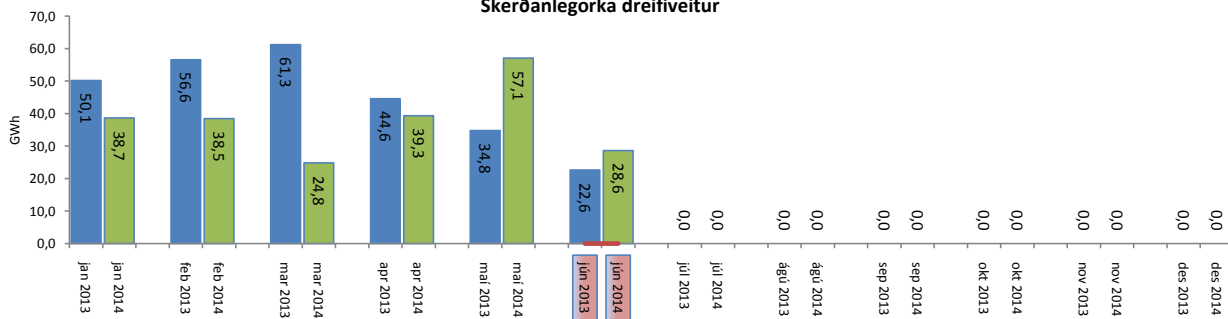
Heildartöp [GWst]:	26,12
Tapahlutfall af innmötun	1,88%
Hámark tapa [MW]:	46,65
Lágmark tapa [MW]:	29,48
Grunntöp [MW]:	32
Pöntuð viðbótartöpu [GWst]:	2,77
Nýtt af viðbótartöpum ársfj. mán.:	17,56%
Nýtt af viðbótartöpum ársfj. heild:	88,45%
Frávik frá pöntun:	6,74%

Flutt orka

Forgangsorika dreifiveitur



Skerðanlegorika dreifiveitur



Orka Stórnotendur

