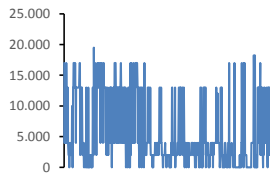
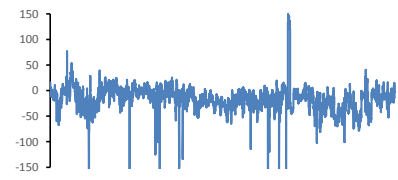


Jöfnunarorkuverð [kr/MWst]



Meðalverð:	5564
Hæsta verð:	19500
Lægsta verð:	0
Hlutfall upp-verðs:	27,5%
Hlutfall nið-verðs:	72,5%

Reglunarafi [MW]



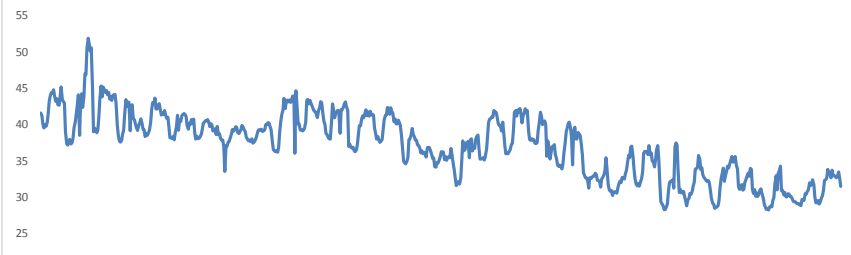
Meðalgildi:	-16
Hæsta gildi:	149
Lægsta gildi:	-349
Hlutfall uppr:	17,54%
Hlutfall niður:	82,46%

Innmötun

Orkuflutn. [GWst]	1.428,9
Meðaltal [MW]:	1.920,6
Hámark [MW]:	2.086,7
Lágmark [MW]:	1.728,4



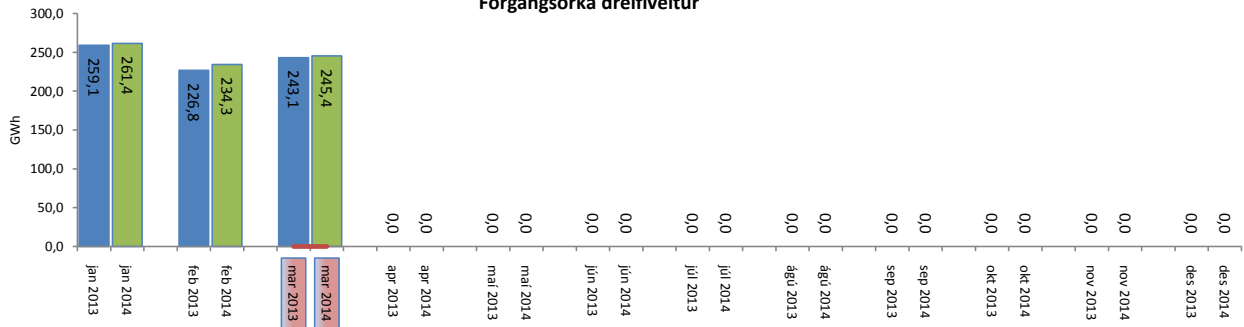
Flutningstöp



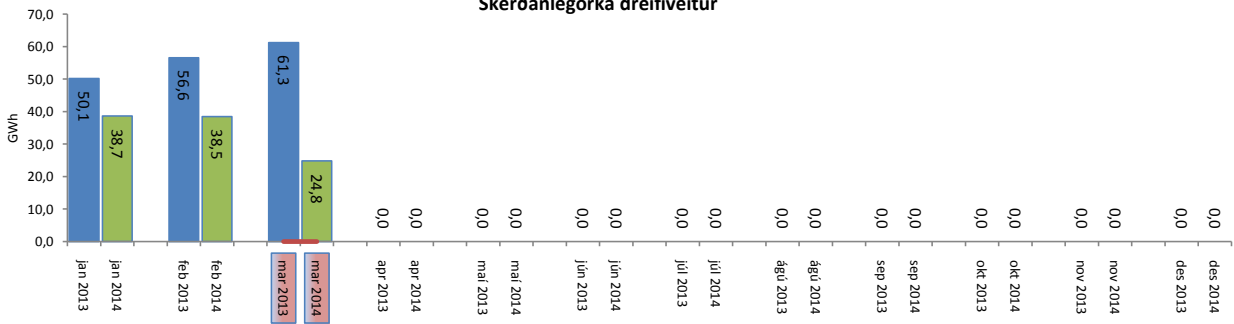
Heildartöp [GWst]:	27,59
Tapahlutfall af innmötun	1,93%
Hámark tapa [MW]:	51,86
Lágmark tapa [MW]:	28,22
Grunntöp [MW]:	39
Pöntuð viðbótartöpum [GWst]:	2,70
Nýtt af viðbótartöpum ársfj. mán.:	28,94%
Nýtt af viðbótartöpum ársfj. heild:	65,17%
Frávik frá pöntun:	9,03%

Flutt orka

Forgangsorka dreifiveitur



Skerðanlegorka dreifiveitur



Orka Stórnotendur

