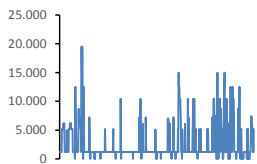
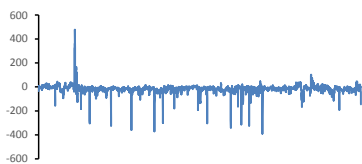


Jöfnunarorkuverð [kr/MWst]



Meðalverð:	2523
Hæsta verð:	19500
Lægsta verð:	0
Hlutfall upp-verðs:	21,5%
Hlutfall nið-verðs:	78,5%

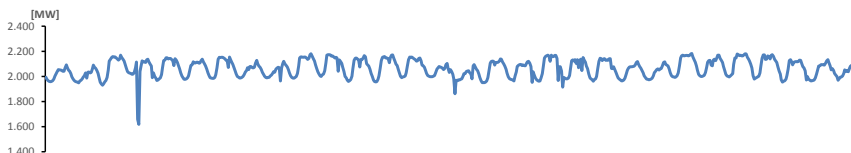
Reglunarafi [MW]



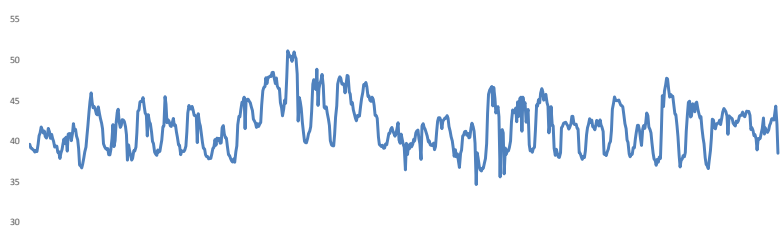
Meðalgildi:	-15
Hæsta gildi:	478
Lægsta gildi:	-390
Hlutfall uppr:	16,02%
Hlutfall niður:	83,98%

Innmötun

Orkuflutn. [GWst]	1.485,5
Meðaltal [MW]:	2.063,3
Hámark [MW]:	2.183,2
Lágmark [MW]:	1.617,9



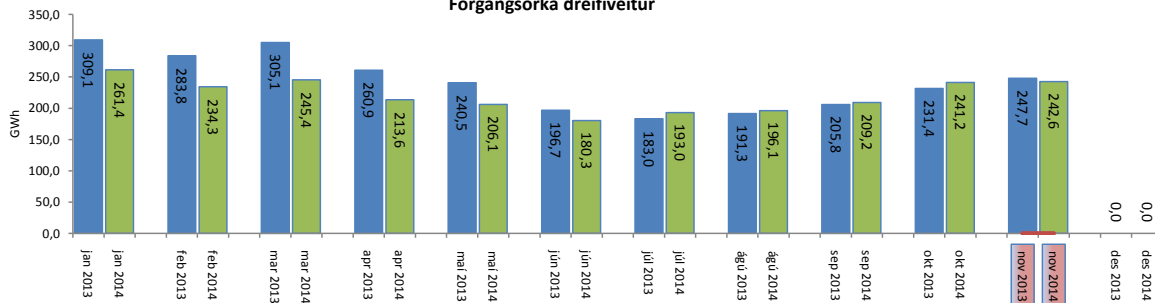
Flutningstöp



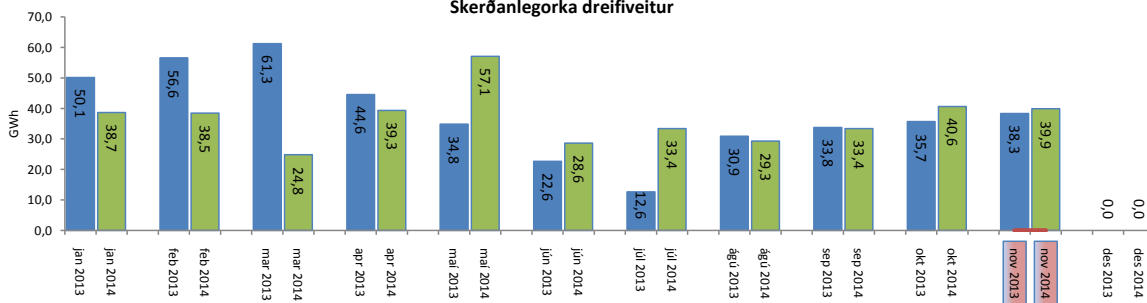
Heildartöp [GWst]:	30,15
Tapahlutfall af innmötun	2,03%
Hámark tapa [MW]:	51,13
Lágmark tapa [MW]:	34,65
Grunntöp [MW]:	37
Pöntuð viðbótartöp [GWst]:	2,63
Nýtt af viðbótartöpum ársfj. mán.:	28,80%
Nýtt af viðbótartöpum ársfj. heild:	68,90%
Frávik frá pöntun:	4,20%

Flutt orka

Forgangsrorka dreifiveitur



Skerðanlegorka dreifiveitur



Orka Stórnótendur

