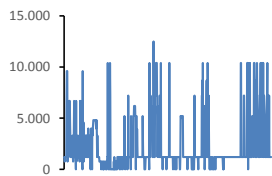
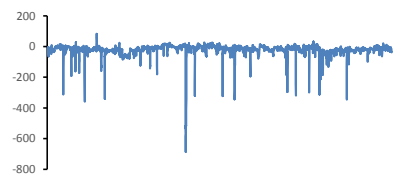


Jöfnunarorkuverð [kr/MWst]



Meðalverð:	2297
Hæsta verð:	12500
Lægsta verð:	0
Hlutfall upp-verðs:	23,3%
Hlutfall nið-verðs:	76,7%

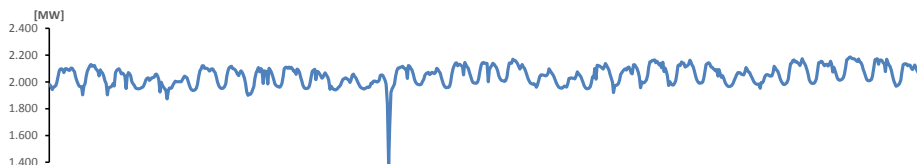
Reglunarafli [MW]



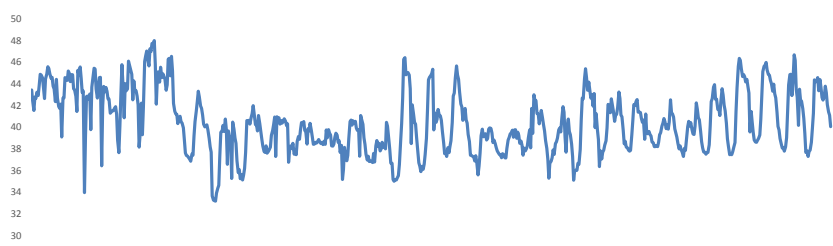
Meðalgildi:	-21
Hæsta gildi:	83
Lægsta gildi:	-686
Hlutfall uppr:	15,86%
Hlutfall niður:	84,14%

Innmötun

Orkuflutn. [GWst]	1.522,6
Meðaltal [MW]:	2.046,6
Hámark [MW]:	2.186,2
Lágmark [MW]:	1.377,9



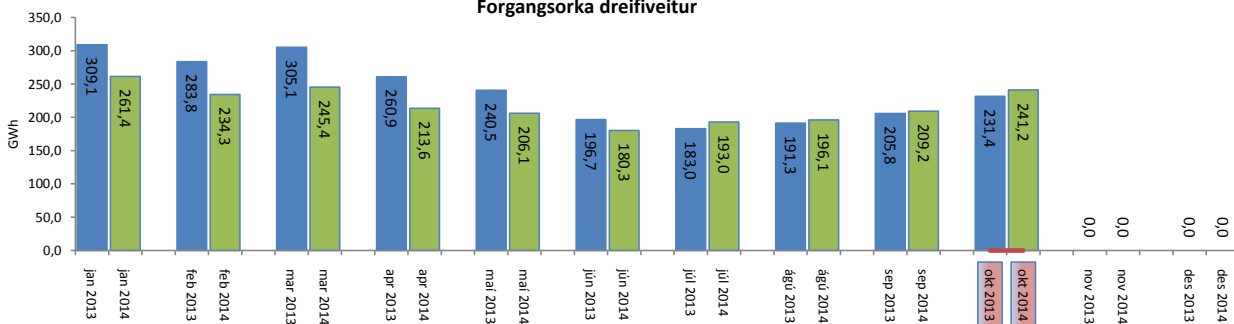
Flutningstöp



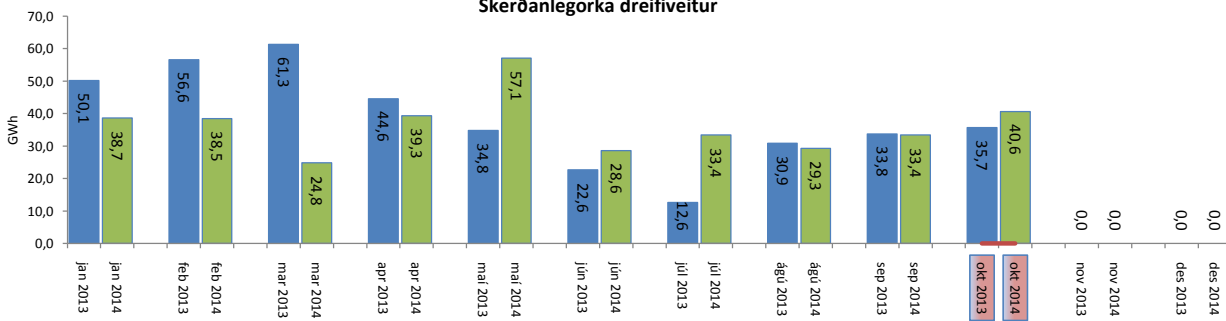
Heildartöp [GWst]:	30,11
Tapahlutfall af innmötun	1,98%
Hámark tapa [MW]:	48,00
Lágmark tapa [MW]:	33,16
Grunntöp [MW]:	34
Pöntuð viðbótartöpum [GWst]:	4,90
Nýtt af viðbótartöpum ársfj. mán.:	40,00%
Nýtt af viðbótartöpum ársfj. heild:	40,00%
Frávik frá pöntun:	4,63%

Flutt orka

Forgangorka dreifiveitur



Skerðanlegorka dreifiveitur



Orka Stórnotendur

