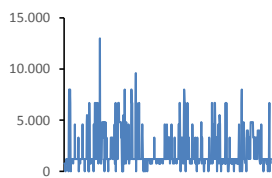
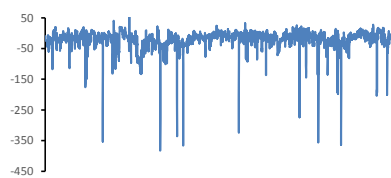


Jöfnunarorkuverð [kr/MWst]



Meðalverð:	1978
Hæsta verð:	13000
Lægsta verð:	0
Hlutfall upp-verðs:	24,3%
Hlutfall nið-verðs:	75,7%

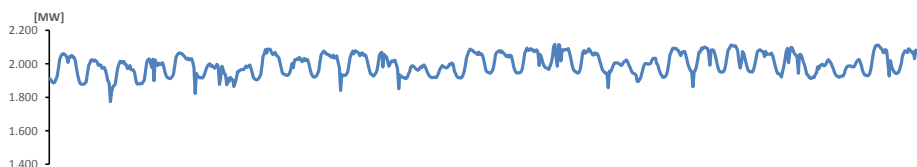
Reglunarafli [MW]



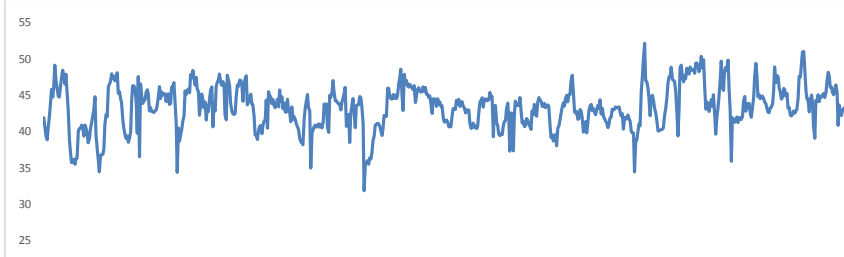
Meðalgildi:	-21
Hæsta gildi:	79
Lægsta gildi:	-383
Hlutfall uppr:	14,19%
Hlutfall niður:	85,81%

Innmötun

Orkuflutn. [GWst]	1.437,4
Meðaltal [MW]:	1.996,4
Hámark [MW]:	2.116,0
Lágmark [MW]:	1.774,1



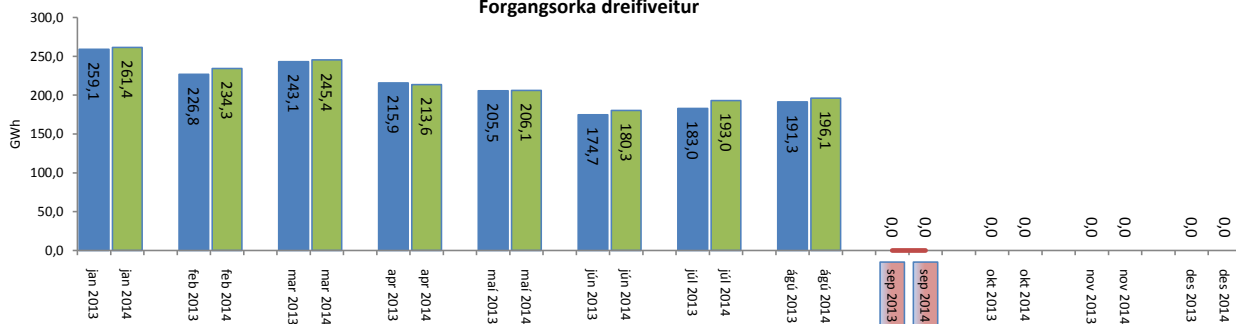
Flutningstöp



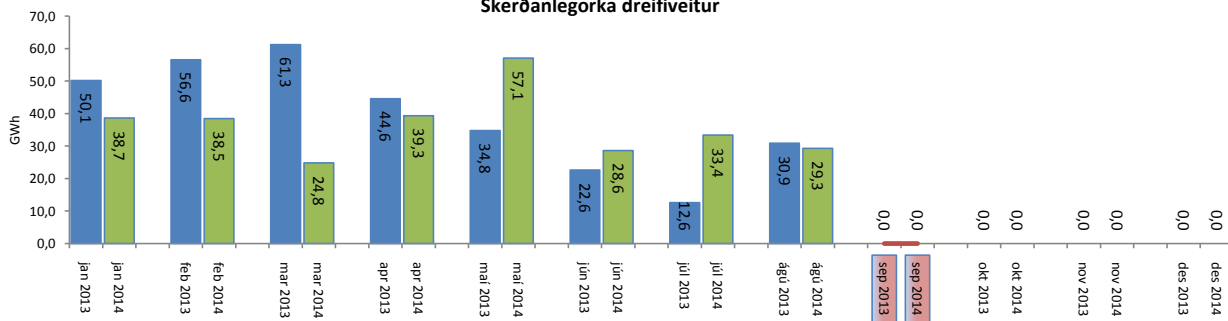
Heildartöp [GWst]:	31,23
Tapahlutfall af innmötun	2,17%
Hámark tapa [MW]:	52,12
Lágmark tapa [MW]:	31,83
Grunntöp [MW]:	33
Pöntuð viðbótartöpum [GWst]:	8,77
Nýtt af viðbótartöpum ársfj. mán.:	56,53%
Nýtt af viðbótartöpum ársfj. heild:	129,04%
Frávik frá pöntun:	6,65%

Flutt orka

Forgangsorka dreifiveitur



Skerðanlegorka dreifiveitur



Orka Stórnotendur

