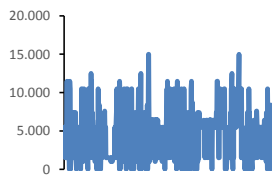
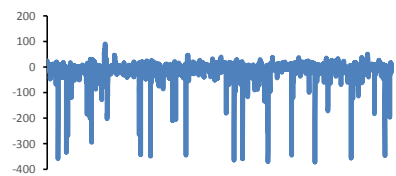


Jöfnunarorkuverð [kr/MWst]



Meðalverð:	4391
Hæsta verð:	15000
Lægsta verð:	0
Hlutfall upp-verðs:	54,3%
Hlutfall nið-verðs:	45,7%

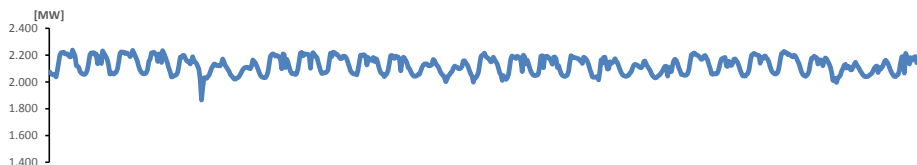
Reglunarafi [MW]



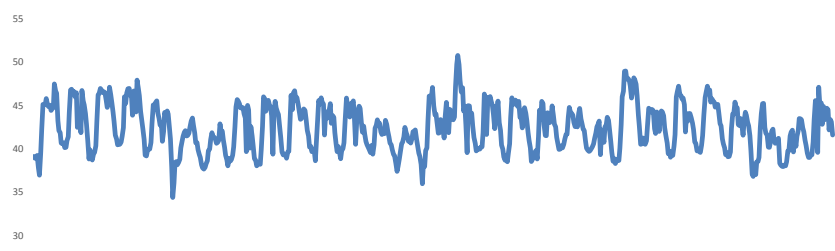
Meðalgildi:	-8
Hæsta gildi:	91
Lægsta gildi:	-371
Hlutfall uppr:	41,39%
Hlutfall niður:	58,61%

Innmötun

Orkuflutn. [GWst]	1.478,3
Meðaltal [MW]:	2.124,0
Hámark [MW]:	2.237,7
Lágmark [MW]:	1.864,7



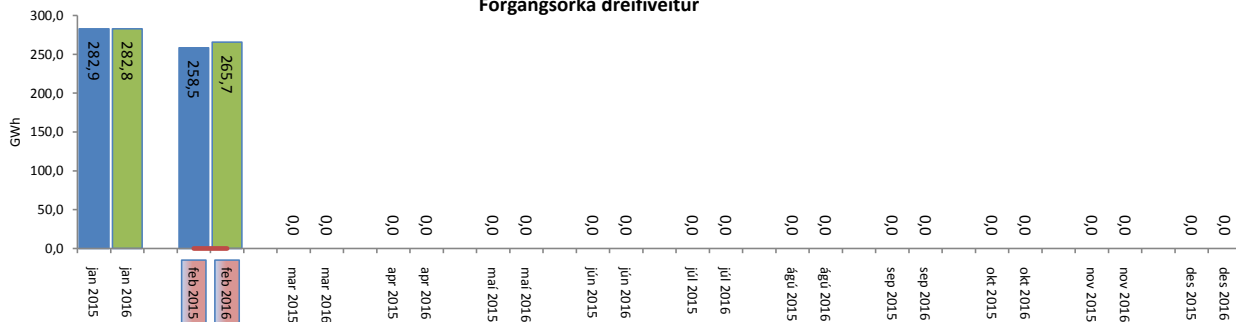
Flutningstöp



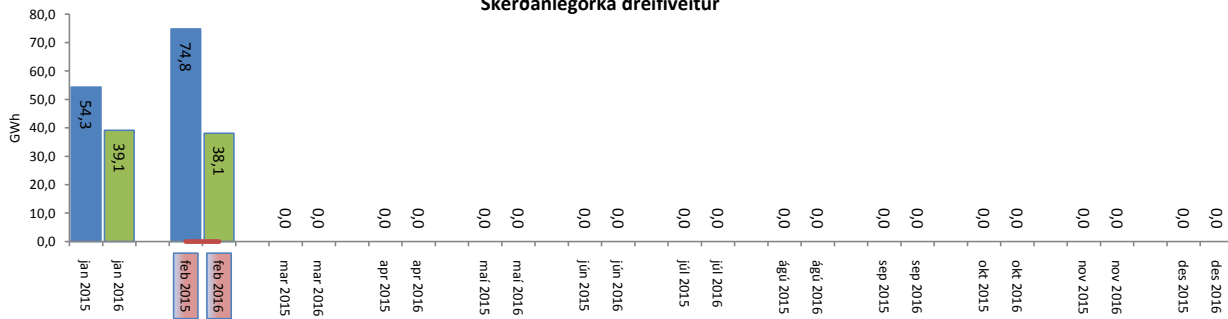
Heildartöp [GWst]:	29,54
Tapahlutfall af innmötun	2,0%
Hámark tapa [MW]:	50,78
Lágmark tapa [MW]:	34,37
Grunntöp [MW]:	40,00
Pöntuð viðbótartöpum [GWst]:	1,91
Nýtt af viðbótartöpum ársfj. mán.:	12,7%
Nýtt af viðbótartöpum ársfj. heild:	27,3%
Frávik frá pöntun:	3,1%

Flutt orka

Forgangorka dreifiveitur



Skerðanlegorka dreifiveitur



Orka Stórnotendur

