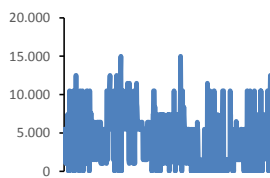
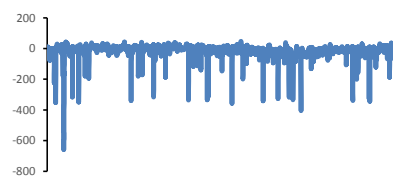


Jöfnunarorkuverð [kr/MWst]



Meðalverð:	4101
Hæsta verð:	15000
Lægsta verð:	0
Hlutfall upp-verðs:	49,5%
Hlutfall nið-verðs:	50,5%

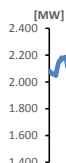
Reglunarafi [MW]



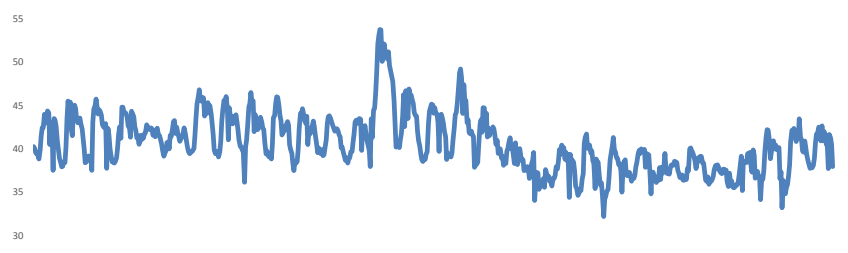
Meðalgildi:	-10
Hæsta gildi:	47
Lægsta gildi:	-658
Hlutfall uppr:	40,34%
Hlutfall niður:	59,66%

Innmötun

Orkuflutn. [GWst]	1.550,8
Meðaltal [MW]:	2.084,4
Hámark [MW]:	2.219,8
Lágmark [MW]:	1.756,5



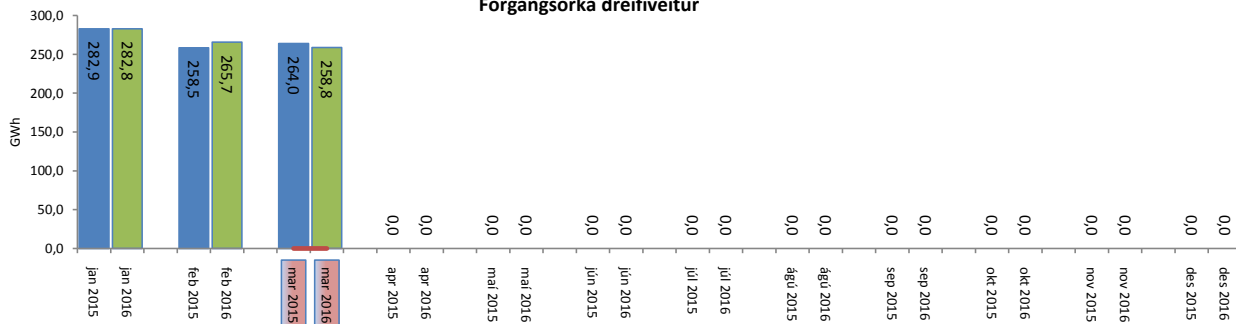
Flutningstöp



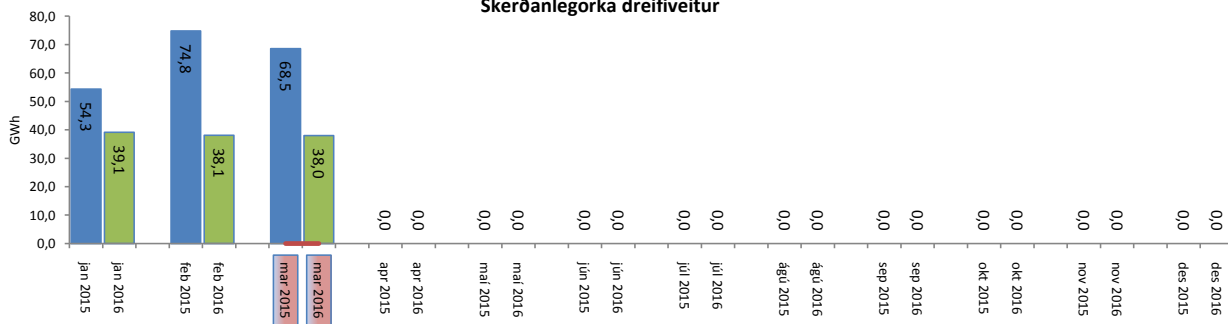
Heildartöp [GWst]:	30,22
Tapahlutfall af innmötun	1,9%
Hámark tapa [MW]:	53,77
Lágmark tapa [MW]:	32,17
Grunntöp [MW]:	39,00
Pöntuð viðbótartöp [GWst]:	2,74
Nýtt af viðbótartöpum ársfj. mán.:	18,2%
Nýtt af viðbótartöpum ársfj. heild:	45,5%
Frávik frá pöntun:	6,6%

Flutt orka

Forgangsorka dreifiveitur



Skerðanlegorka dreifiveitur



Orka Stórnotendur

